

## Pixel Size and Dose information

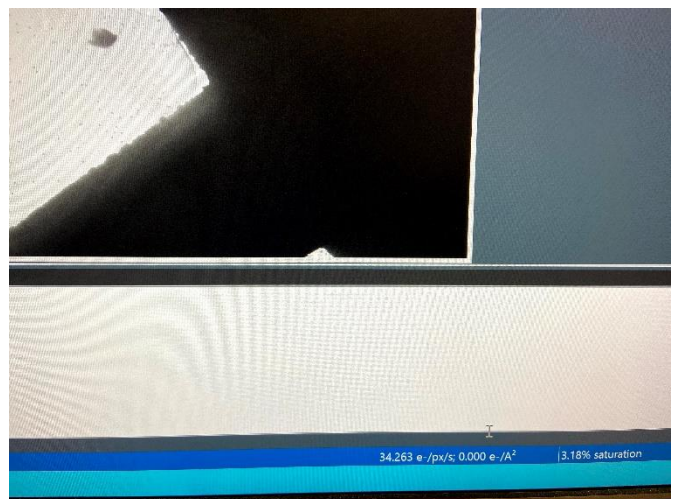
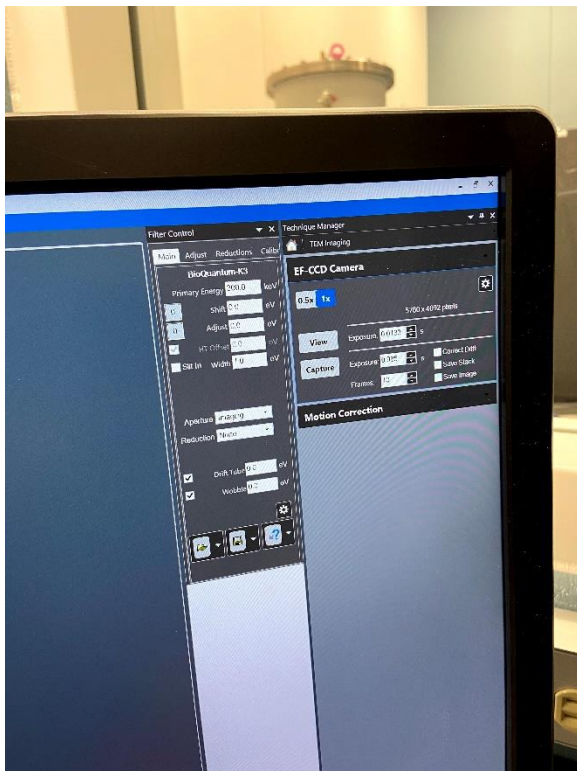
**Set up parameters (ss, C2/illumination area) precisely for data collection:**

Find a target/hole -> On Gatan (K3) PC -> DM -> take an image  
Image Properties -> Pixel Size

## Dose information

Find an empty area or undock grid (use vacuum) -> On Gatan (K3) PC -> **DM** -> take an image

- 1 second exposure with Bin=1, counting mode, >10 fractions
- dose rate information would be shown at the lower right corner of the image taken.



## Alternatively using SerialEM

- under Record, set Bin=1, 1 second exposure;
- record an image;
- click Calibration -> electron dose.
- dose information would be shown at the top of the image recorded.