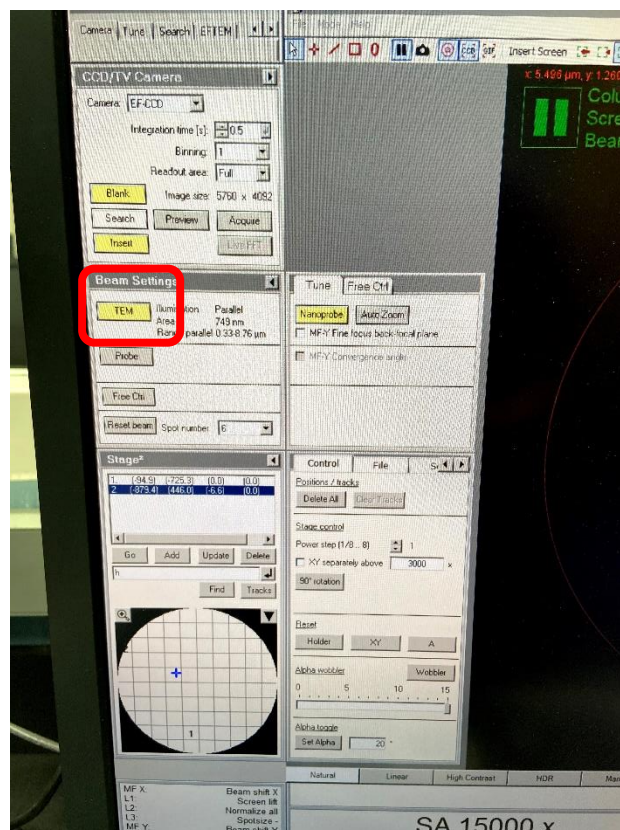
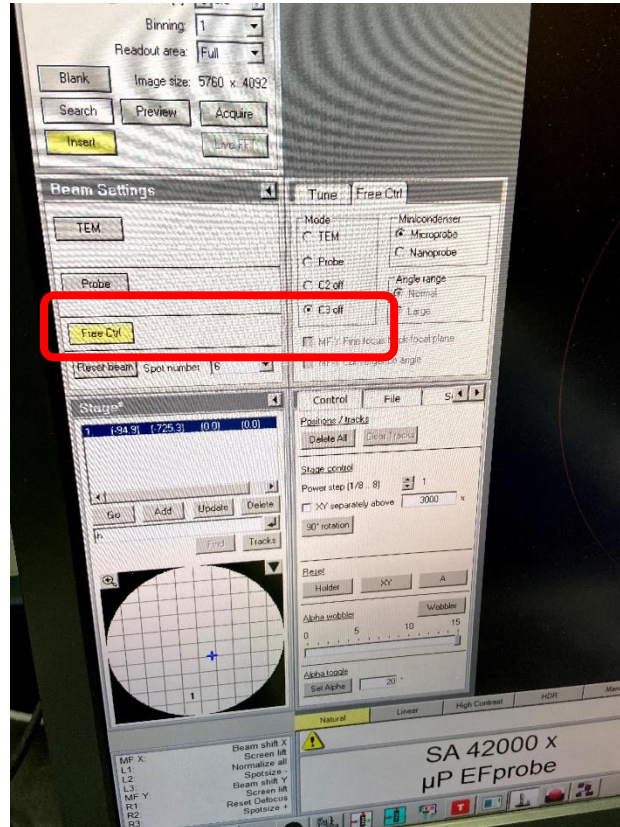


Center Condenser 2 Aperture with C3 OFF (check C2 Stigmator)

For Krios ONLY

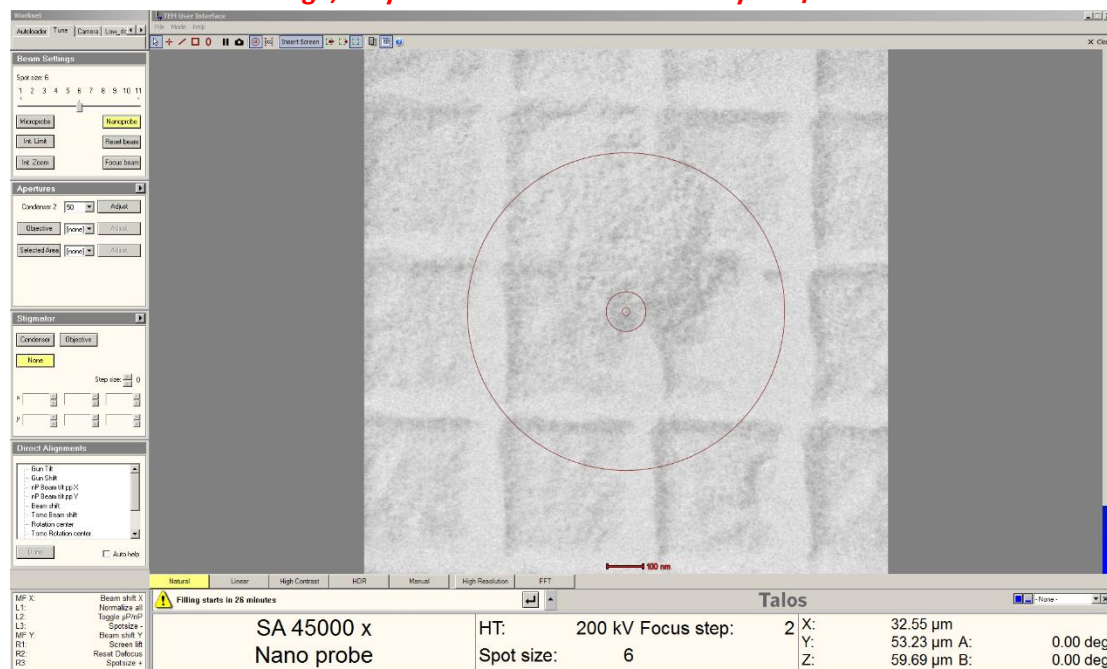
- under “Camera” -> Beam Settings -> Free Ctrl -> check “C3 off”;
- adjust C2 aperture;
- click “TEM” when finished.



Center Condenser 2 Aperture with C3 OFF (check C2 Stigmator)

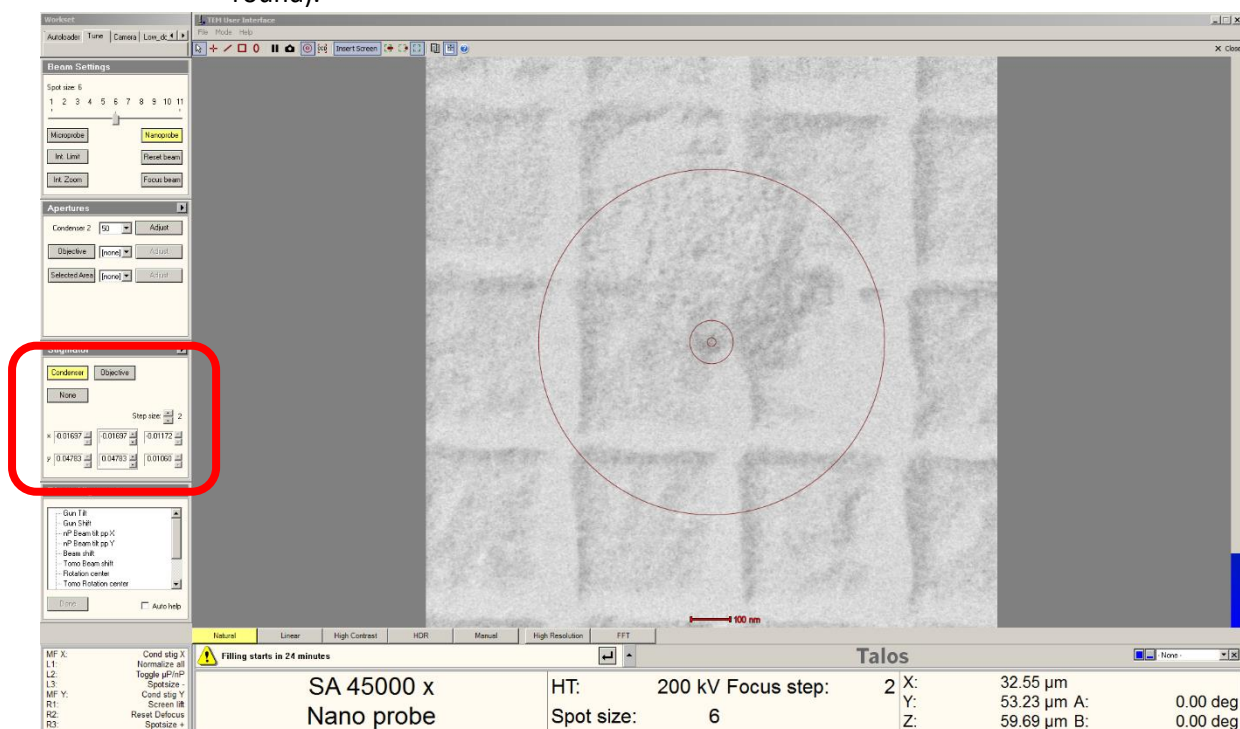
Set Spot Size 6, Nano Probe, SA=MAG of data collection (ie. 105K), C2=70 (with C3 OFF)

- Center beam
 - Dial, only counter-clockwise, with Intensity dial/knob, to cross-over (minimum size);
 - Beam shift -> center with MFx/MFy dials/knob -> Done;
 - **To enlarge, only dial clockwise with Intensity Dial/knob.**



Check C2 Stigmatism

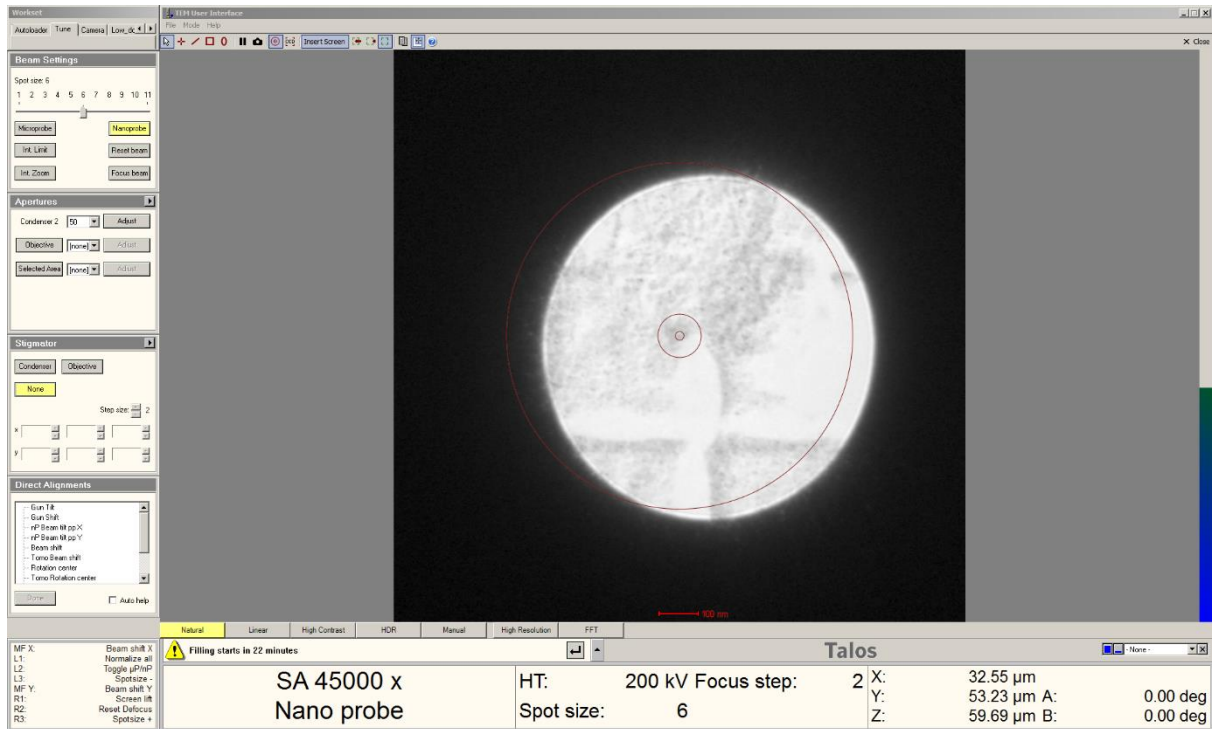
- No adjustment needed here, just copy and paste here;
- Click on Stigmator -> Condenser:
 - First column should be around x: -0.01697 y: 0.04783);
 - Right click copy;
 - Right click on second column and paste (should notice change of shape, more round).



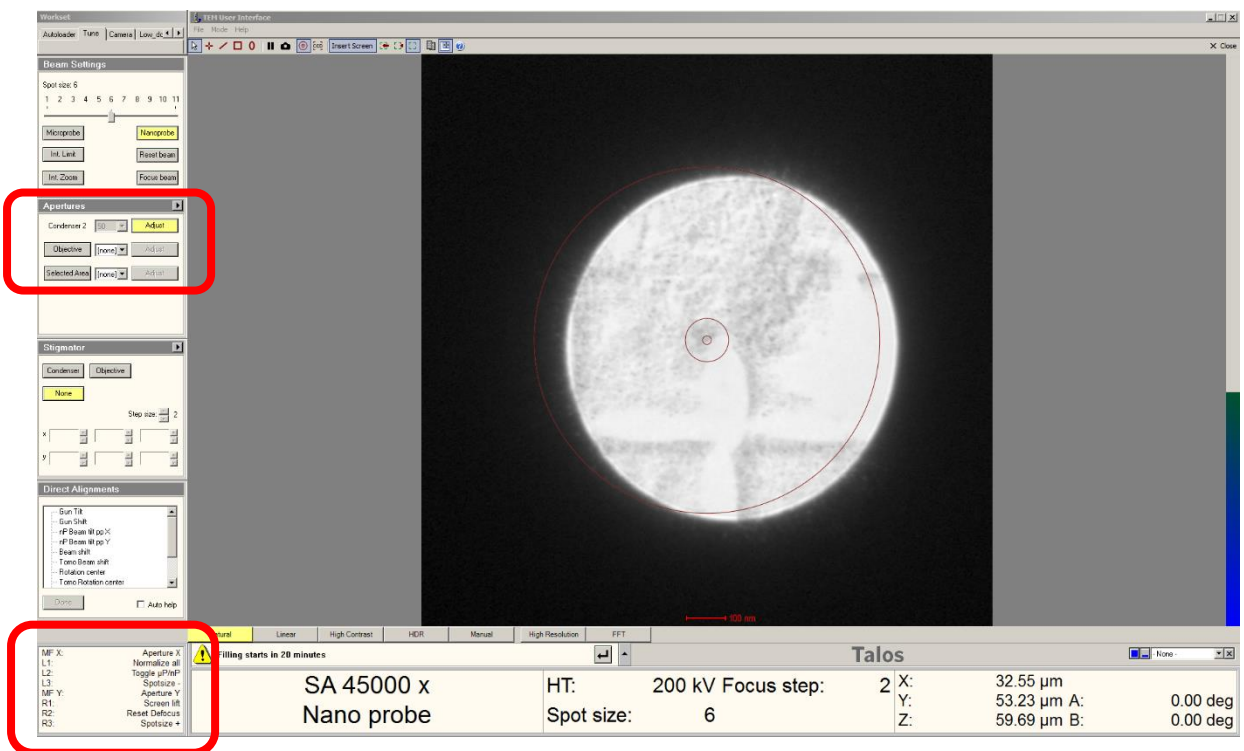
Center Condenser 2 Aperture with C3 OFF (check C2 Stigmator)

Center C2 Aperture

- Condense to cross-over with Intensity dial/knob, Center beam again;
- Spread beam to outer ring (**clock-wise!!!**); PNCC check both directions



- Click "Apertures" -> [Condenser 2] Adjust (in red box);
- Use MFX/MFY dial/knob to adjust Aperture X/Y back to center.



- Click "Adjust" again when finished.