

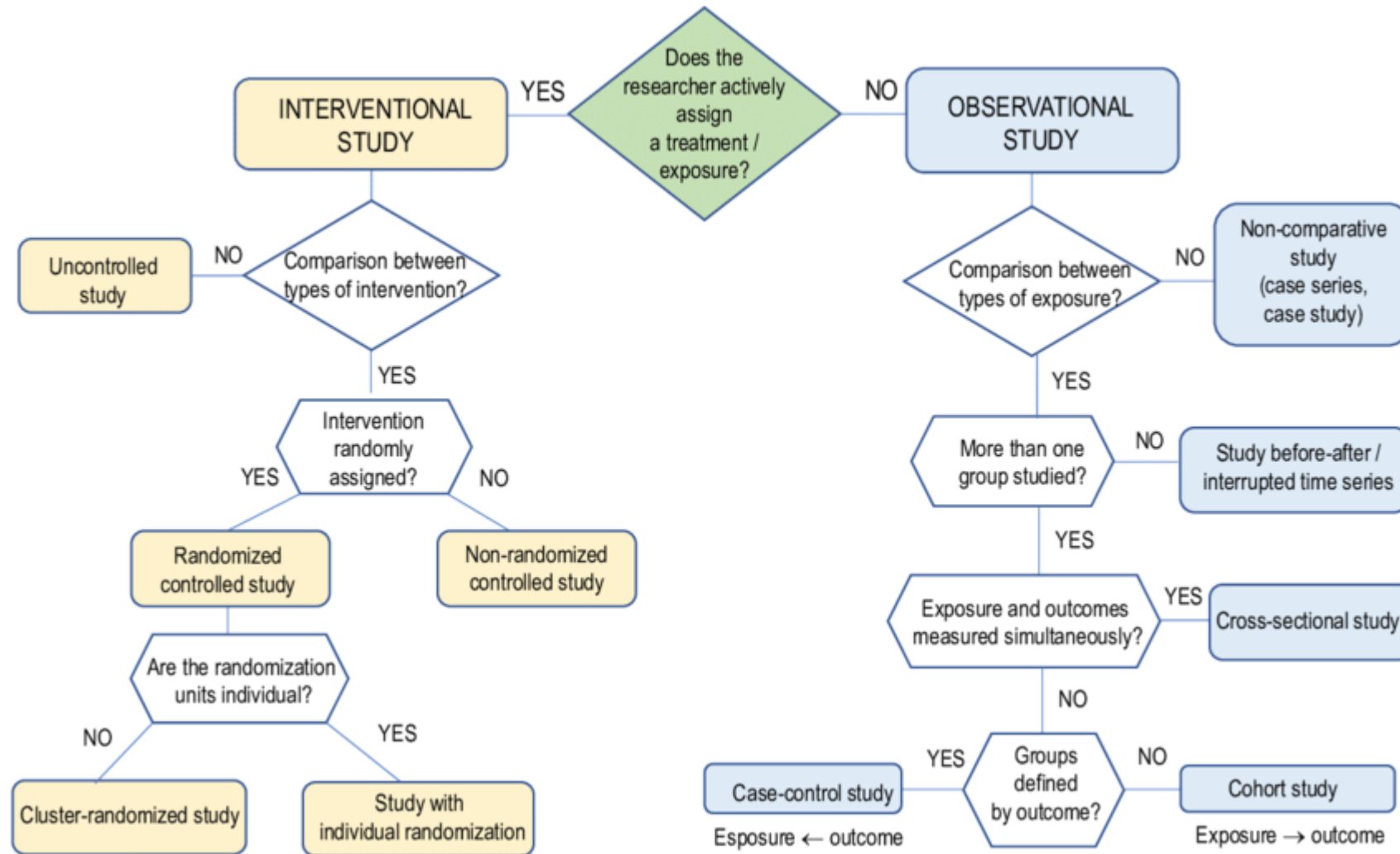
Methods of Research

Part One

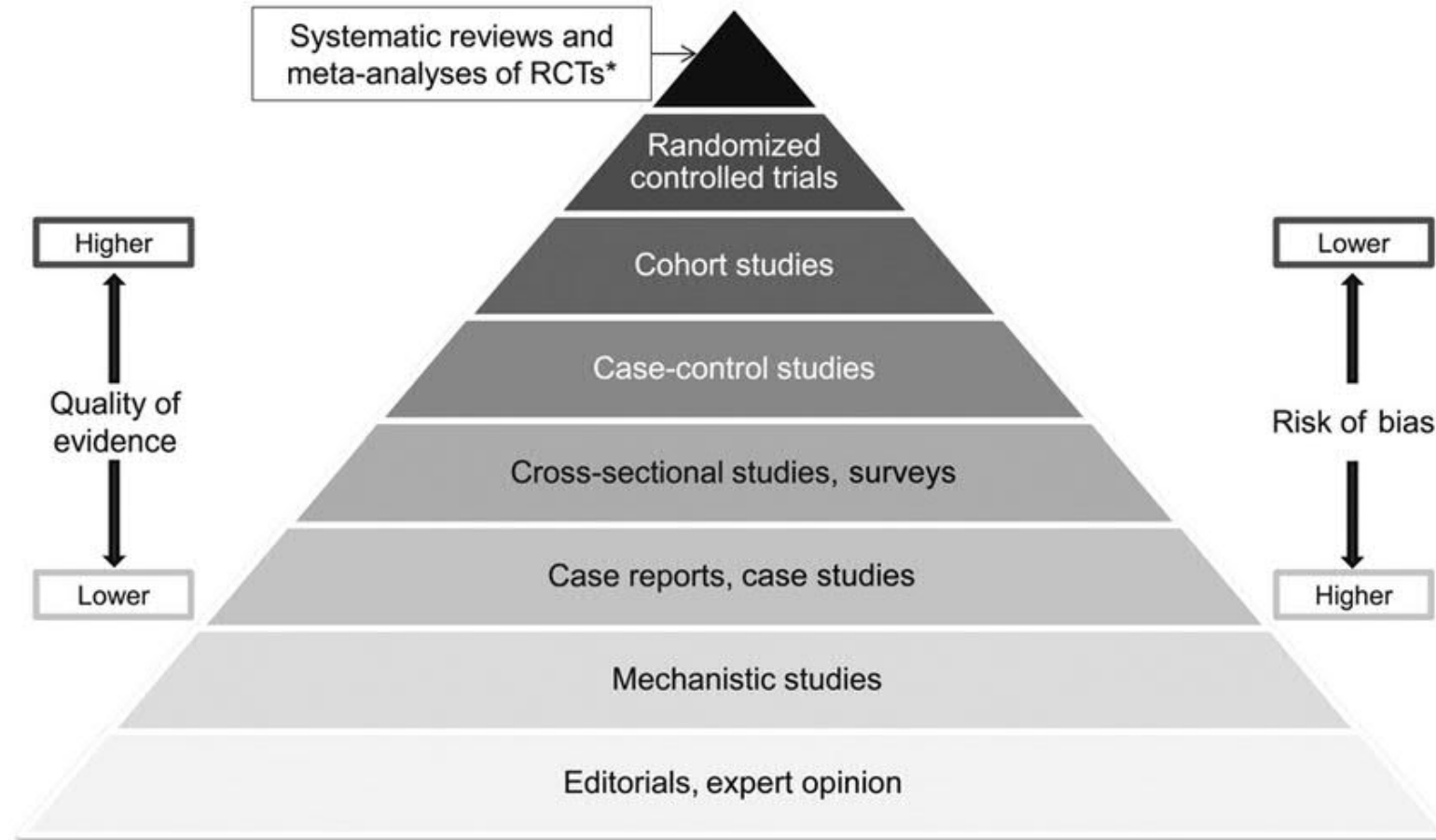
Study Design – Overview

- Two main types of study design
 - Observational
 - Experimental
- Key feature: who determines the intervention?

Interventional vs Observational Studies



The Main Types of Study Designs – Hierarchy of Evidence



Observational studies

Many types of studies - right research design depends on the question we ask

Observational studies

- Large proportion of research
- Can be valuable (e.g. AE) but also many disadvantages (confounding, bias)

Without comparison group – **descriptive**:

(do not try to qualify the relationships but give us a perspective of what is happening in the population, prevalence or experience of a group)

- Case reports, case series, qualitative studies, some cross-sectional studies (surveys)

With comparison group - **analytical**

(attempts to qualify relationship between two factors – effect of an intervention / exposure on an outcome)

- Cohort studies, case-control studies, some cross-sectional studies

