

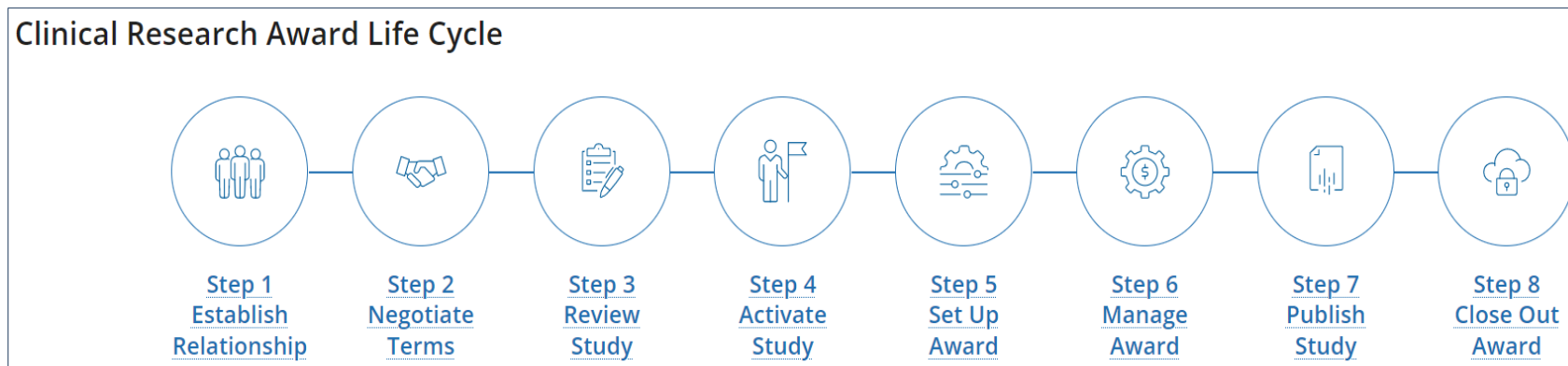
---

Clinical Trial Finance Team  
Sponsored Programs Administration

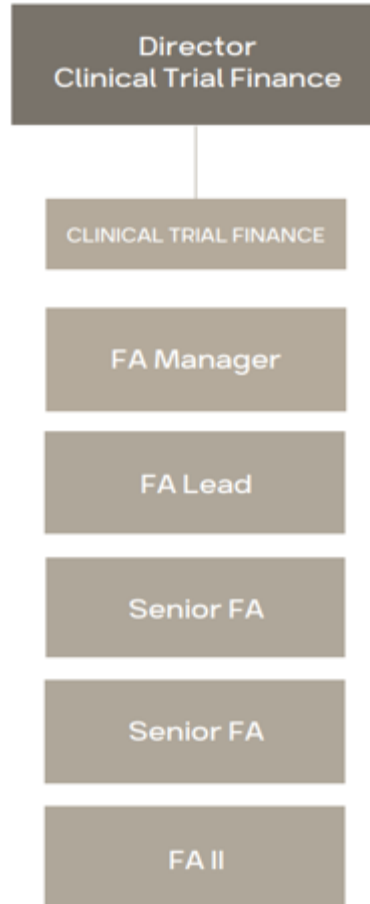
## SPONSORED PROGRAMS ADMINISTRATION: THE GATEWAY FOR RESEARCHERS TO SECURE FUNDING AND USE FUNDS APPROPRIATELY



**Clinical Trial Finance:** Responsible for the billing and invoicing of clinical trials, in conjunction with departmental personnel. Additionally, the CT Finance Team handles clinical trial budget review, ClinCard administration, treasury services for all awards, On Account payment management, customer maintenance, bank account validations, and management of Payment Management System (PMS) draws.



## SPONSORED PROGRAMS ADMINISTRATION: CLINICAL RESEARCH SUPPORT TEAMS



### **Clinical Trial Finance**

- ✓ Reviews and manages clinical trial expenses
- ✓ Bills for all start-up costs and perform funding to appropriate departments
- ✓ Clinical trial financial management on a per-study basis
- ✓ Payments for subjects participating in clinical trials

## SPONSORED PROGRAMS ADMINISTRATION: EDUCATION AND TRAINING



### Sponsored Programs

[Link to SPA Education Webpage](#)

[Basic Science](#) [Clinical Research](#) [Compliance & Operations](#) [Education & Training](#) [News & Events](#) [Tools & Resources](#) [Contact Us](#)

[Basic Science Researchers](#)  
[Basic Support Staff](#)  
[Clinical Researchers](#)  
[Clinical Researchers Support Staff](#)

## Education & Training

### Summary

We offer comprehensive training modules to help you through the award life cycle process. **All training courses are available in Taleo Learn. Type SPA in the search menu to view a list of existing training.**

## Clinical Research Modules

- Clinical Research Services Overview
- Clinical Trial Accounting and Analysis Overview
- Introduction to ClinCard by Greenphire
- ClinCard Compliance and Best Practices
- Clinical Trial Budgeting
- Clinical Trial Sponsor Negotiations

Live virtual DCT training sessions held the second Wednesday of each month.  
To request an invite, email [SPAOutreach@UTSouthwestern.edu](mailto:SPAOutreach@UTSouthwestern.edu).

