
Protocol Review and Monitoring System (PRMS)

Simmons Comprehensive Cancer Center

The Simmons Comprehensive Cancer Center Protocol Review and Monitoring System (PRMS) provides independent peer review for scientific merit, prioritization, and monitoring for all cancer-related clinical and population science studies conducted at the UT Southwestern Medical Center and its affiliated healthcare systems, Parkland Health and Hospital System and Children’s Medical Center.



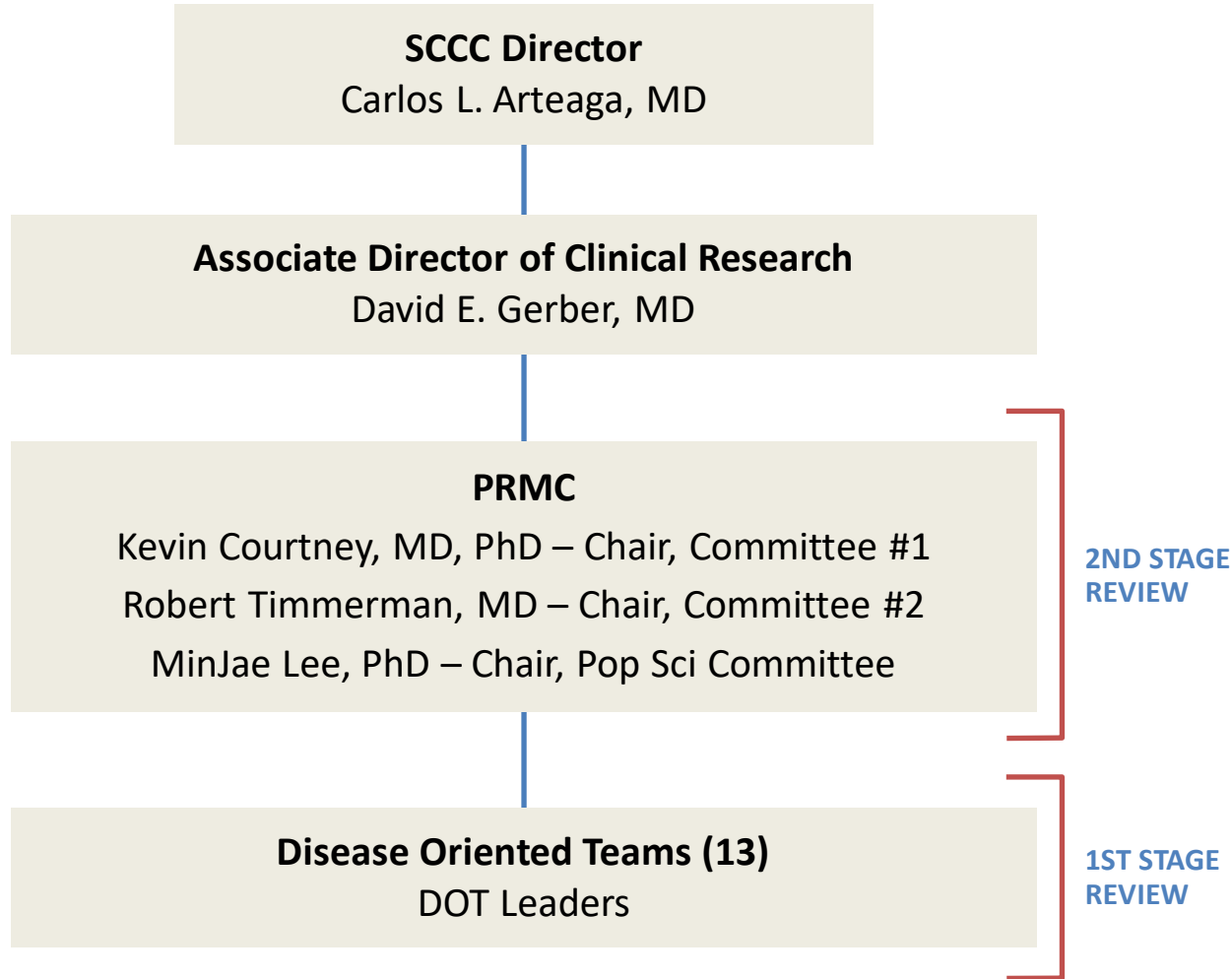
- **Only NCI Designated Comprehensive Cancer Center in North Texas**
- **Cancer Center Support Grant (CCSG)**
- **PRMS Approval Required**

Does My Study Require Protocol Review and Monitoring Committee (PRMC) Review? Determining Cancer Related.

Cancer-related outcomes or other study endpoints may reflect clinical treatment or quality of life, change in attitudes/beliefs or behaviors, or healthcare delivery for either solid tumors or hematology/hematologic malignancies. Such studies can occur at any point along the cancer care continuum, including screening and early detection, diagnosis and treatment including palliation and symptom management, through survivorship, as well as end of life and hospice.

These studies then may include enrollment or measurements of any of the following: 1) cancer patients, their caregivers or relatives 2) or cancer clinical care team members, 3) or individuals targeted for cancer prevention activities including lifestyle change, 4) or the assessment of cancer epidemiologic, imaging, or biological markers.

Protocol Review & Monitoring System



PRMC 1 Chair

Kevin Courtney, MD, PhD
Associate Professor, Internal Medicine



PRMC 2 Chair

Robert Timmerman, MD
Professor and Vice Chair, Radiation Oncology



Population Science PRMC Chair

MinJae Lee, PhD
Associate Professor, Population and Data Sciences

PRMC Process Guidance

- **Two Stage-Review Approval Process** applies to all cancer related studies including those that are initiated outside of the Cancer Center.
- Outside departments must utilize the Cancer Center DOT associated with the disease site.



PRMS SharePoint Site: <https://365utsouthwestern.sharepoint.com/sites/SCCC/SitePages/Protocol-Review-and-Monitoring-System.aspx>
(or: <https://tinyurl.com/5hyfe9vv>)

- PRMC Submission Forms
- SCC Protocol Template
- PRMC Committee Meeting Schedule
- DOT Leaders
- PRMC Department Contacts

PRMS Department Contacts:



Tiffany L. Levine, MBA
PRMS Manager
Tiffany.Levine@UTSouthwestern.edu
Phone: 214-648-5106



Taler Jefferson, MS
Senior Program Coordinator
Taler.Jefferson@UTSouthwestern.edu
Phone: 214-648-5754



Chastity Escalante, MBA
Senior Program Coordinator
Chastity.Escalante@UTSouthwestern.edu
Phone: 214-648-9672

