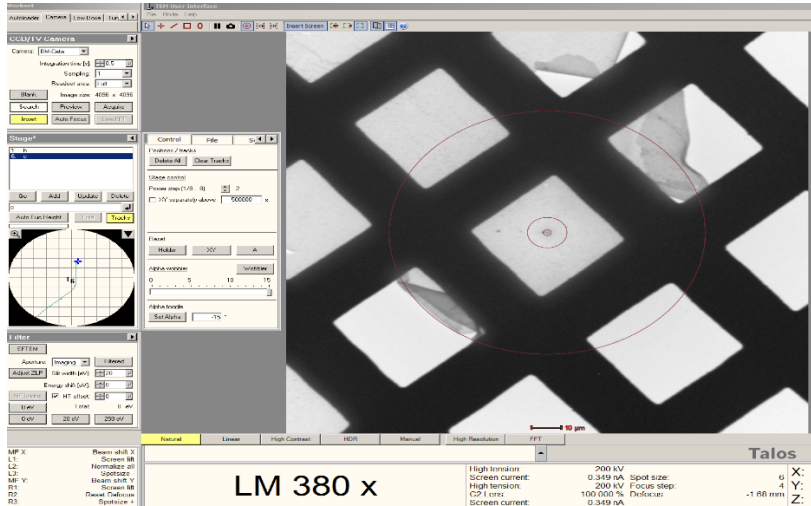


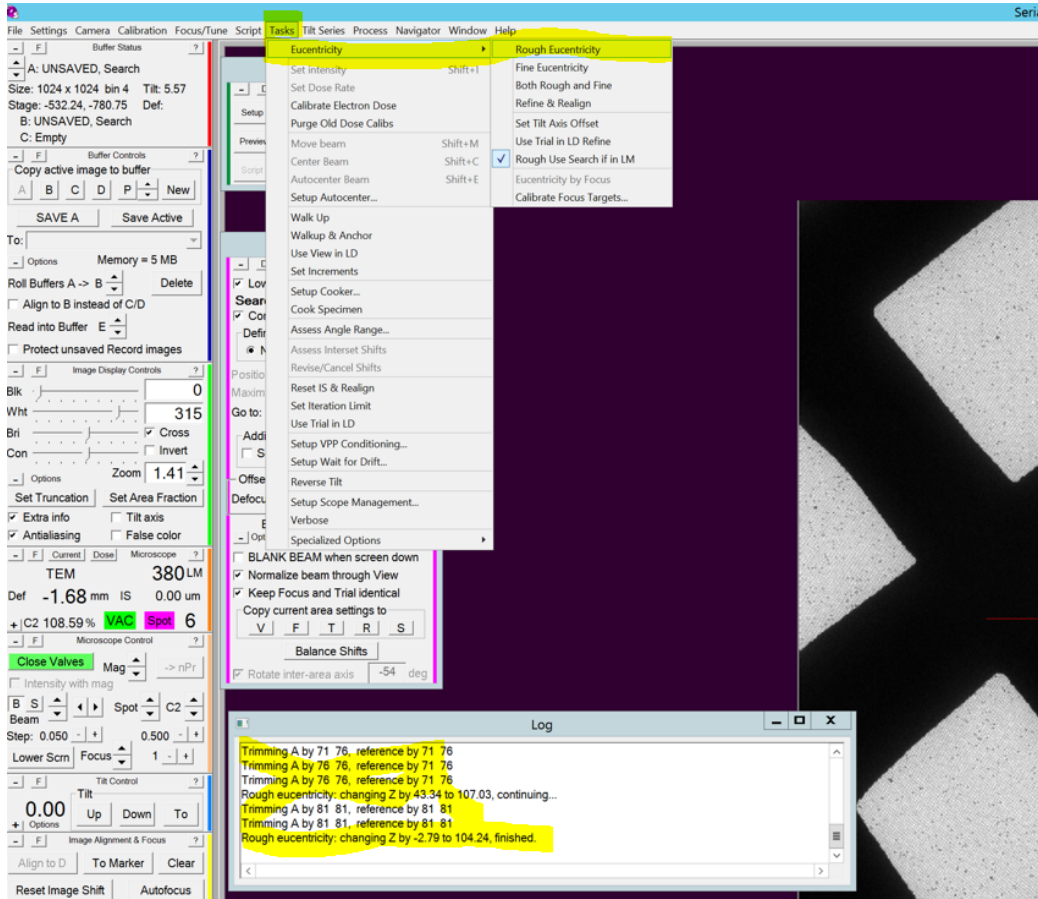
## Screening Protocol

### Eucentric Height

- Find desirable square at LM Magnification/SerialEM Search Beam settings.

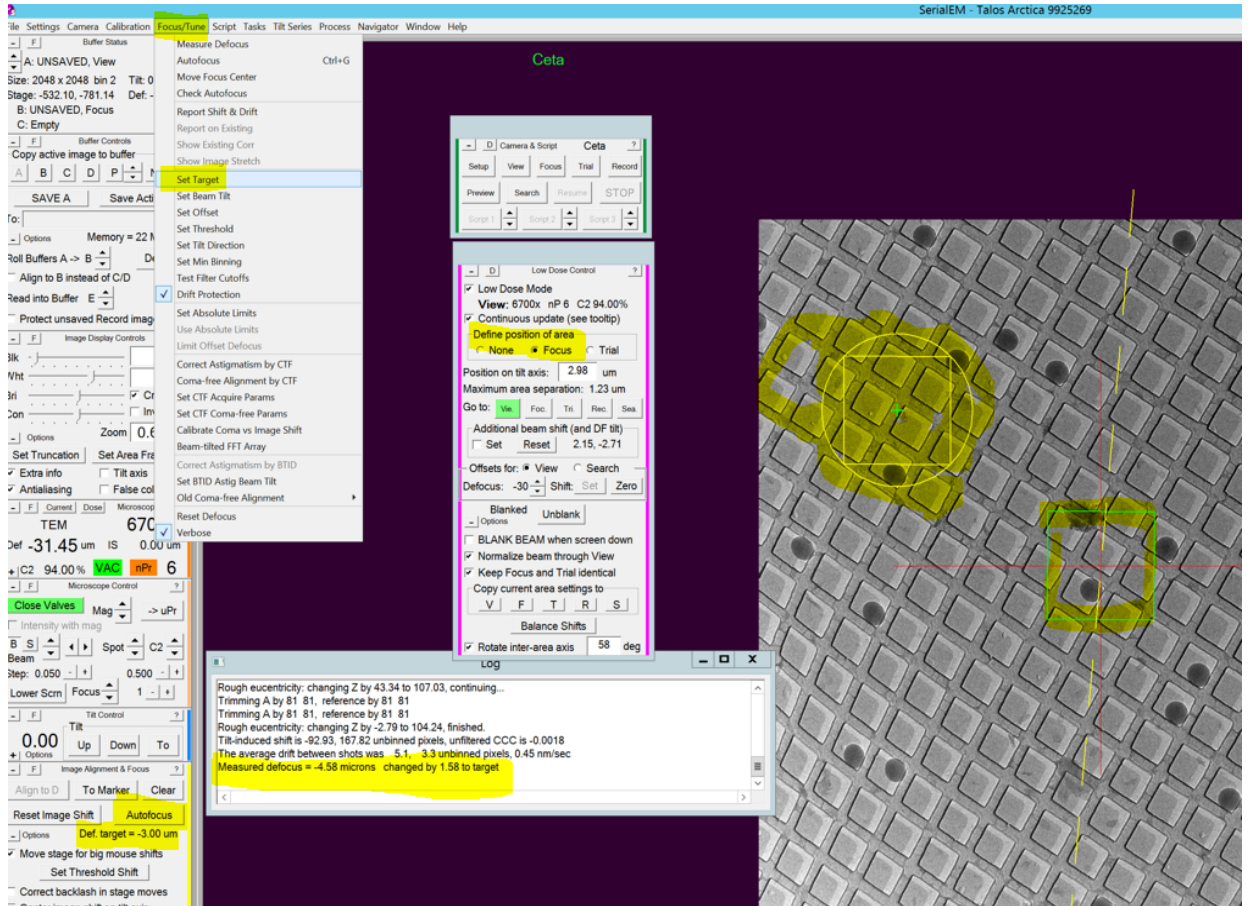


- Go to SerialEM > take a **Search** picture of found square>then SerialEM top ribbon **Task>Eucentricity>Rough Eucentricity**> wait for serialEM to finish measuring Z height, message in log window.



## Focus Area and Defocus Target

- Take **View Picture**> Drag image to center on desired area/hole> take a View pic and drag till centered.
- **Low Dose Control** panel> select **Area of Focus**> click away from desired area/carbon area on current View Pic. Note - this only needs to be done once when a new grid is loaded, as orientation of holes and carbon will change with each new grid.
- Go to Serial EM top ribbon> Focus/Tune > Set Target> -3um to start.
- Hit Autofocus button> wait for serialEM to measure/set desired Focus.

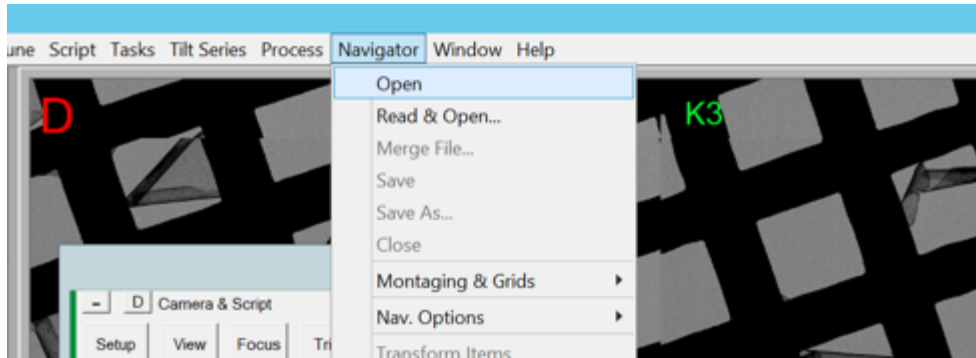


## Final Picture

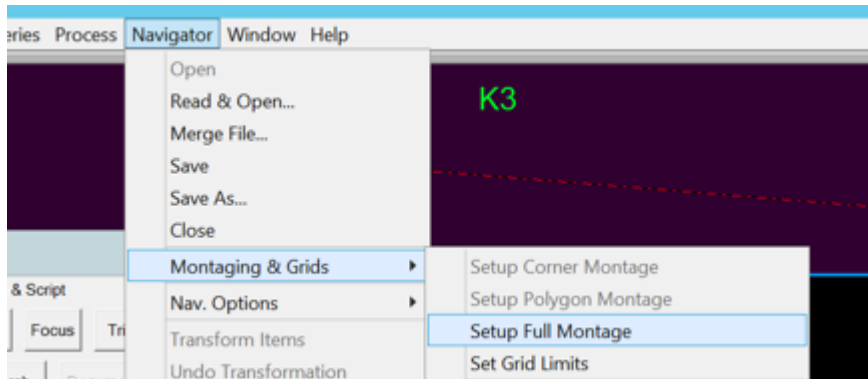
- Go to serialEM Camera panel>Hit **Record**

## Map/Montage Full Grid

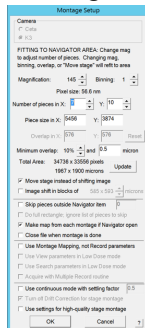
- Microscope setup – LM145x, 150um C2 aperture, C2% set big enough to cover camera, set camera to .5 sec exposure, Bin 1 for high res map. Bin 4 for lower res map
- Open a navigator from serialEM top ribbon> Navigator> Open



- Top ribbon> Navigator>Montaging & Grids>Setup Full Montage



- Montage setup window will launch> Default setting > hit ok and save as LMM.st



- Go to serialEM left tiles>Montage Controls> Start

