

September 14, 2011

T. BOONE PICKENS AUDITORIUM (NG3) ROOM 112

1:00 - 5:00 P.M.

INTRODUCTION

1:00 P.M.

FEATURED SPEAKERS:

LASZLO KURTI, Ph.D.

*Biochemistry
New Synthetic Approaches to Structurally Diverse Bioactive Heterocycles*

PUNEETH IYENGAR, M.D., Ph.D.

*Radiation Oncology
Inflammation, Cachexia, and Treatment Resistance in Lung Cancer*

MATTHEW MOSCONI, Ph.D.

*Psychiatry
Neurocognitive and Sensorimotor Phenotypes Associated with Autism*

LINDSAY COWELL, Ph.D.

*Clinical Sciences
Antigen Receptor Repertoires and Their Analysis for Patient Diagnosis and Management*

NAN YAN, Ph.D.

*Internal Medicine
Innate Immune Recognition of HIV*

IVAN D'ORSO, Ph.D.

*Microbiology
Mechanisms of HIV Transcription and Reprogramming of Host Cell Gene Expression*

KEVIN CHOE, M.D., Ph.D.

*Radiation Oncology
A Genome-wide Search for Mediators of Glioma Initiation and Progression*

BREAK

2:50 P.M.

HUAQI JIANG, Ph.D.

*Developmental Biology
Regulation of Tissue Homeostasis and Regeneration in the Adult Drosophila Midgut*

GENEVIEVE KONOPKA, Ph.D.

*Neuroscience
Human-Specific Signaling Networks in the CNS*

AMIT SAWANT, Ph.D.

*Radiation Oncology
Closing the Loop(holes) in Image-Guided Radiotherapy of Moving and Deforming Tumors*

MIN CHEN, Ph.D.

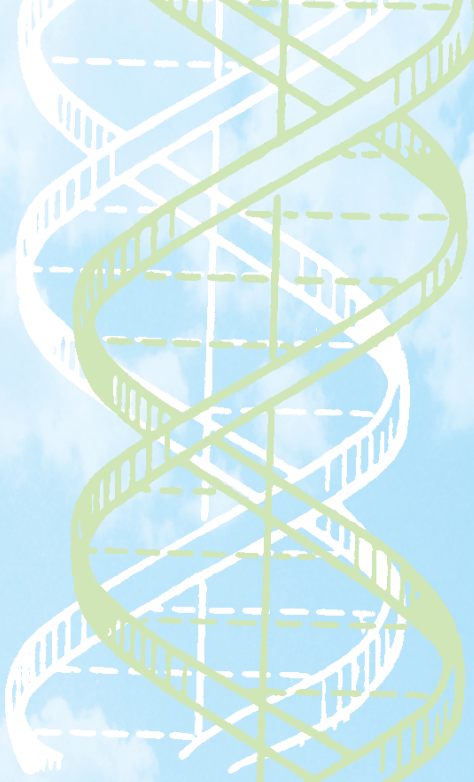
*Clinical Sciences
Statistical Issues in Next-Generation Sequencing Data Analysis*

DENISE MARCIANO, M.D., Ph.D.

*Internal Medicine
The role of p120 Catenin in Renal Tubulogenesis and Glomerulogenesis*

DANIEL ROSENBAUM, Ph.D.

*Biochemistry
Signaling Through Integral Membrane Protein Conformational Change*

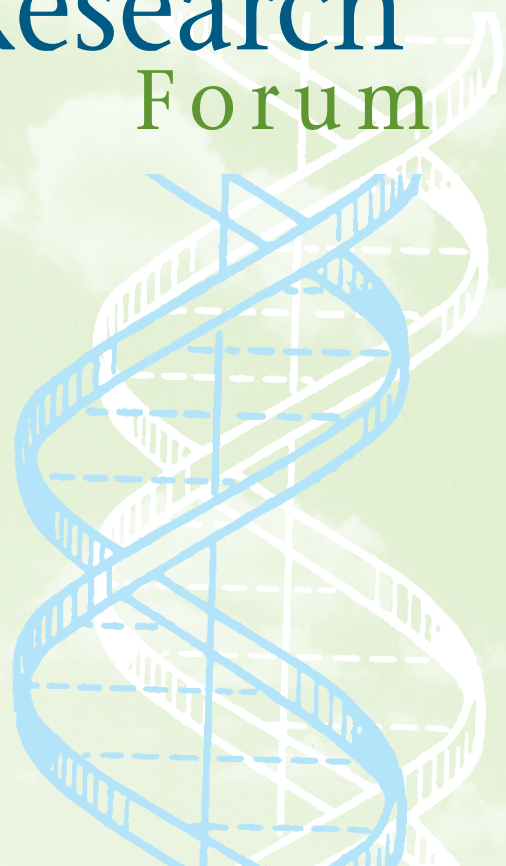


UT Southwestern Medical School
and
UT Southwestern Graduate School of
Biomedical Sciences
present

2011 - 2012

New

Faculty Research Forum



UT SOUTHWESTERN
MEDICAL CENTER