

October 4, 2006

MEDICAL EDUCATION & CONFERENCE CENTER (NG3) ROOM 112

1:00 - 4:30 P.M.

INTRODUCTION

1:00 P.M.

FEATURED SPEAKERS:

BEATRIZ FONTOURA, PH.D.

Cell Biology

Nuclear Transport Factors: from Viral Pathogenesis to Cell Division

CHIN-RANG YANG, PH.D.

Simmons Comprehensive Cancer Center

A Non-linear Robust System of Biological Networking

CHRISTOPHER COWAN, PH.D.

Psychiatry

Molecular Mechanisms of Neuronal Connectivity

HANZHANG LU, PH.D.

Advanced Imaging Research Center

Think Inside the Steel Box: Probing Brain Functions Using MRI

OLATUNJI WILLIAMS, M.D.

Pediatrics

Mucus Hypersecretion in Fatal Asthma: A Molecular Approach to a Physiological Catastrophe

COLLEEN MCCLUNG, PH.D.

Psychiatry

Role of the Circadian Clock in Mood Disorders and Drug Addiction

BREAK

2:30 P.M.

MATTHEW GOLDBERG, PH.D.

Neurology

Mouse Models of Familial Parkinson's Disease

P. ROBIN HIESINGER, PH.D.

Physiology

A Genetic Approach to Synapse Formation and Function in Drosophila

ELIZABETH MAHER, M.D., PH.D.

Internal Medicine

The Glioblastoma Genome: A Link to Rational Therapeutics for Glioma

ROBERT BACHOO, M.D., PH.D.

Neurology

Gliogenesis: Insights into Gliomagenesis

JULIE PFEIFFER, PH.D.

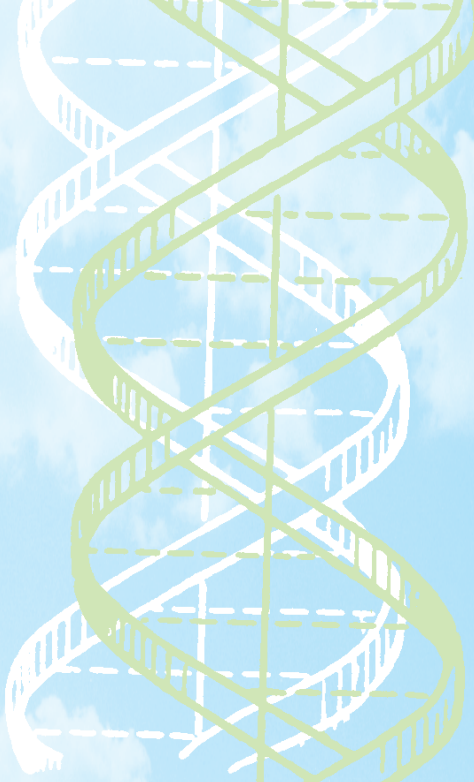
Microbiology

RNA Virus Evolution and Drug Resistance

JAMES BRUGAROLAS, M.D., PH.D.

Internal Medicine

Renal Cell Carcinoma, Pathways and Therapies



UT Southwestern Medical School
and
UT Southwestern Graduate School of
Biomedical Sciences
present

2006 - 2007

New

Faculty Research Forum

