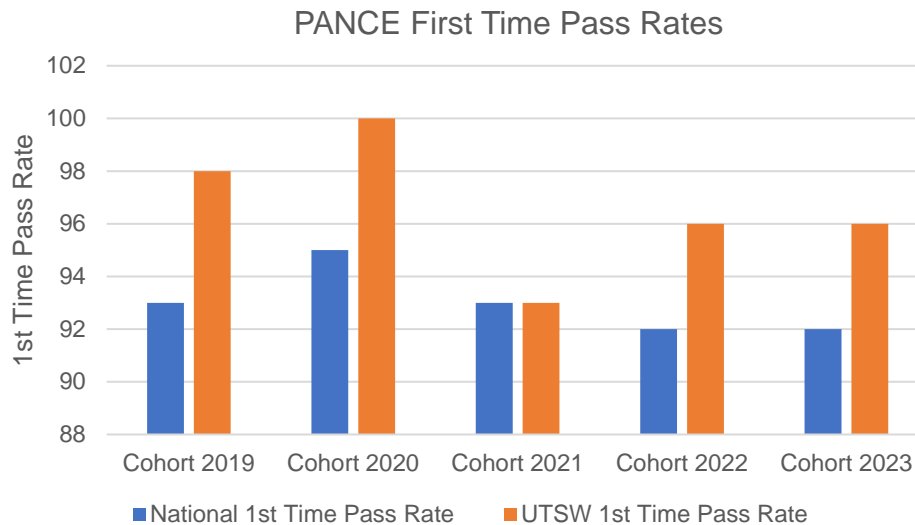


UT Southwestern School of Health Professions Success in Meeting Program Goals:

1. To exceed the U.S. national average first time pass rate on the Physician Assistant National Certifying Examination (PANCE).

For the past five years, 97% of UT Southwestern PA Program graduates passed the PANCE on their first attempt, which met or exceeded the US national average each year. The UTSW PA Program's pass rate in comparison with the US national mean of first-time exam takers for the past five years is illustrated below.



2. To provide student clinical education opportunities in diverse and medically underserved areas/populations.

100% of students in Cohorts 2021, 2022, and 2023 completed at least one supervised clinical practice experience in a medically underserved areas as defined by the Health Resources and Services Administration (HRSA) up to a maximum of eight unique SCPEs across all cohorts. Qualitative data from student exit interviews show that students felt well prepared to provide care to a diverse population.

3. To demonstrate excellence in faculty scholarship, leadership, and service.

Faculty Scholarship: faculty academic and research efforts that result in submission to and publication of manuscripts in peer-reviewed journals; intramural and extramural grant submissions and awards; scholarly presentations at local, regional, and national meetings.

Faculty Scholarship Benchmarks:

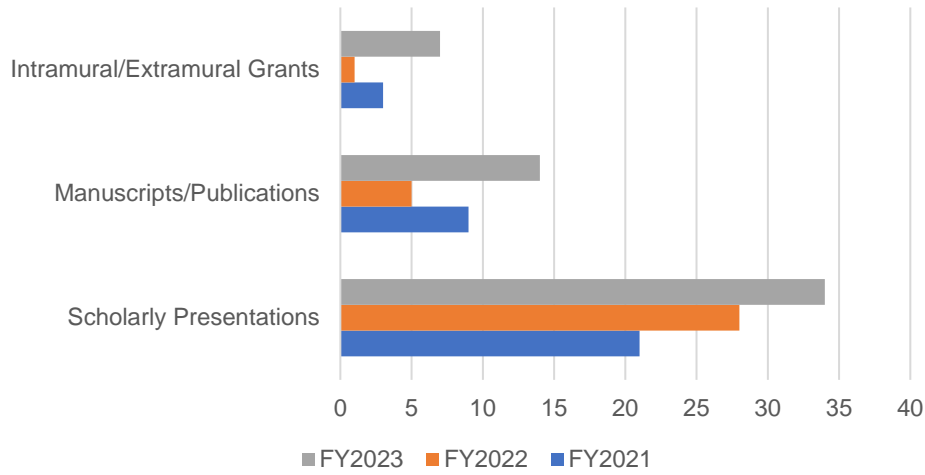
Manuscripts/Publications: ≥ 5 per fiscal year

Grant Submissions/Awards: ≥ 2 per fiscal year

Scholarly presentations (oral/poster/workshops): ≥ 15 per fiscal year

During FY2021 – FY2023, UTSW PA Program faculty met or exceeded all scholarship benchmarks, with the exception of FY2022, when the program did not meet its benchmark for grant submissions and awards.

Department of PA Studies Faculty Scholarship

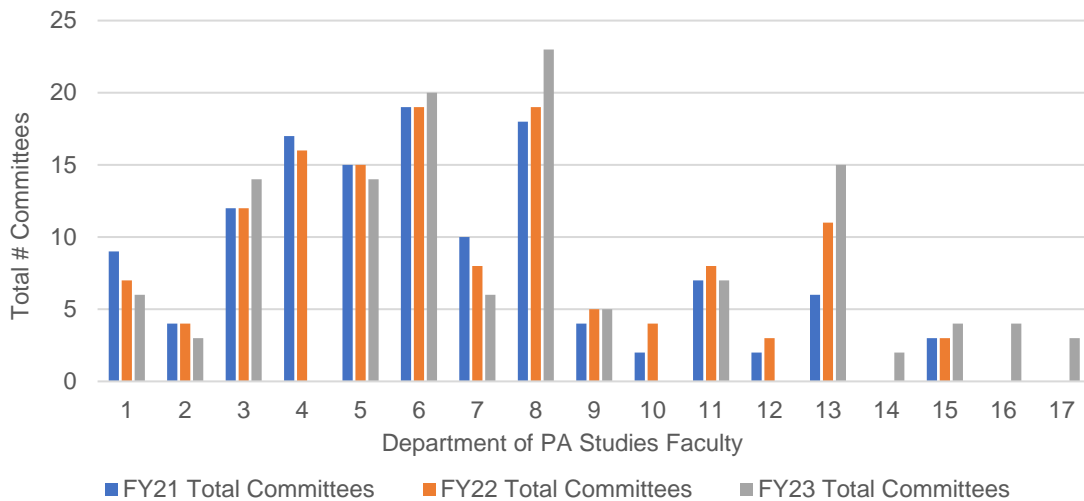


Faculty Service: Faculty membership and/or leadership of committees internal and external to the UT Southwestern School of Health Professions

Faculty Service Benchmark: 100% faculty participation and service in membership and/or leadership roles on ≥ 2 committees internal and/or external to UT Southwestern School of Health Professions.

During FY2021 – FY2023, UTSW PA Program faculty met its service benchmark, with 100% faculty participation and service in membership and/or leadership roles on ≥ 2 committees internal and external to the UT Southwestern School of Health Professions. This is inclusive of committees in the department, SHP, UTSW, and external committees at the local, regional, and/or national level.

Department of PA Studies Faculty Service



* FY21-FY22 Faculty 14,16,17 not employed by the department

*FY23 Faculty 4,10,12 transitioned to instructional faculty or left program

4. Provide longitudinal educational experiences in evidence-based medicine (EBM) and quality improvement and patient safety (QI/PS).

The program is successful in its implementation of EBM and QI/PS longitudinally across the curriculum, as illustrated below. Graduating student feedback on the Student Exit Interview for Cohorts 2021-2023 indicates that the program's curriculum provided sufficient breadth and depth in the interpretation and application of medical literature to patient care.

