

Anatomy: **LOWER EXTREMITY**
 Sub-Anatomy: **Rheumatology HIP- Ortho 3T**

- Exams **ORDERABLE- HIP – Unilateral**
 - Routine Coil: **HIP (Torso coil)**

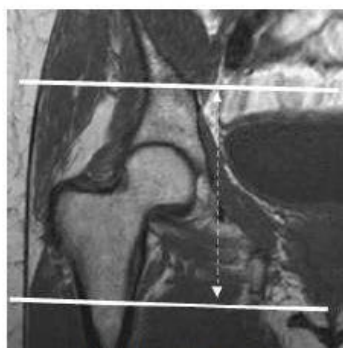
| SEQUENCE - BASICS | | | | | | | | | | | | | | |
|---------------------|----------------|----------------------|----------------|-------|-----|-----------------|------|-------|--|--|------------------|--------------|-----------------|--------------------|
| PLANE | SEQ | Slice thickness (mm) | Misc / Comment | M T X | Gap | Voxel size (mm) | TR | TE | | | ETL Turbo Factor | Phase Encode | Scan TIME (min) | Pixel Shift BW-kHz |
| ROUTINE | | | | | | | | | | | | | | |
| | 3 plane scout | | Only use GRE | | | | | | | | | | | |
| AX | mDIXON QUANT | 3.5 | | | | | | | | | | | | |
| COR | PD mDIXON | 3.5 | unilateral | | 10% | 0.5x0.6 | 3000 | 35-40 | | | | | | |
| SAG | PD FS | 3.5 | unilateral | | 10% | 0.5x0.6 | 3000 | 35-40 | | | | | | |
| AX | T2 mDIXON | 3-4 | unilateral | | 10% | 0.5x0.6 | 3000 | 55 | | | | | | |
| AX | DWI | 4/0 | 7 b values | | | | | | | | | | | |
| SAG | 3D PD SPAIR | 3D | unilateral | | 0 | 0.65 iso | | | | | | | | |
| SAG | T1 mDIXON Pre | 3D | | | | 1x1x1 | | | | | | | | |
| COR | 4D TRAKS | | 25 dynamics | | | | | | | | | | | |
| SAG | T1 mDIXON Post | 3D | | | | 1x1x1 | | | | | | | | |
| ↓ OPTIONAL ↓ | | | | | | | | | | | | | | |
| | STIR | 3.5 | Failed fat sat | | 10% | 0.5x0.6 | 3000 | | | | | | | |

Instructions: FOV and Coverage- On axials, cover above the acetabulum to femoral metadiaphyseal junction. On coronals, just anterior to femoral vessels to behind the ischial spine/tuberosity. On sagittals, cover from medial to acetabulum to slightly lateral to greater trochanter.

Large subject: Use torso coil, increase voxel size to 0.75mm or resort to 2D imaging; if problem with SNR or wrap, etc- call OPB/PMH for remote monitoring help.

Others- Always put marker at the site of most pain, injury or swelling. If motion observed, stop the scan, instruct patient to lay still and repeat the sequence.

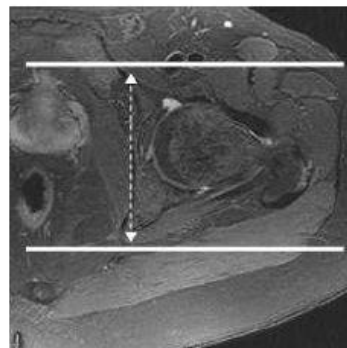
4D TRAKS – Dose dependent on patients weight. Inject and scan at the same time – 25 dynamic scan. 2cc/sec



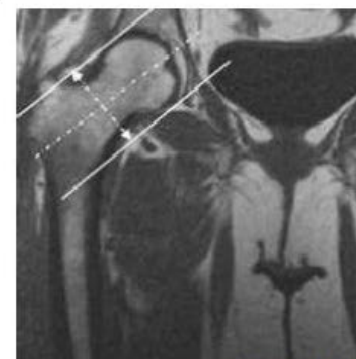
Axial Image Coverage



Sagittal



Coronal



Oblique Axial