

Anatomy: Pelvis

Coil: XL Torso

Image Acquisition Protocol: Perianal Fistula

UTSW ORDERABLE: MRI PELVIS W/WO

Last Edited: 9/19/2019 Review Date: 9/19/2019

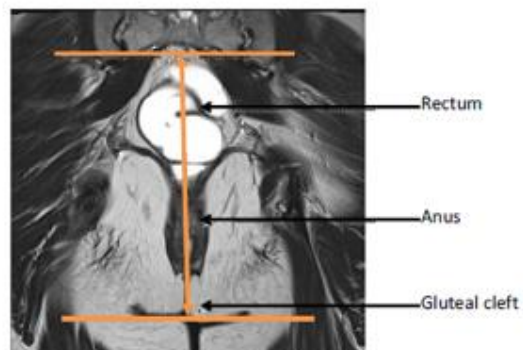
Allotted Scan Time: 45 minutes

SEQUENCE - BASICS

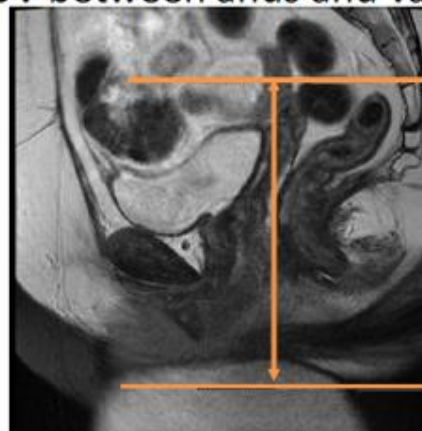
PLANE	SEQUENCE	Coverage	Slice Thickness/Gap (mm)	Pixel Size (mm)	FOV (cm)	TR (ms)	TE (ms)	Misc./Comments
ROUTINE								
Be sure gauze has been placed to separate gluteal cleft								
SAG	3D T2 FSE	*See diagram	3/-1.5	0.6 x 0.6	20	2500-5500	200	
AX	2D T2 FSE	*See diagram	4/.4	0.5 x 0.5	18	Shortest	130	
AX	2D T2 FS SSFSE	*See diagram	4/.4	0.5 x 0.5	18	Shortest	130	
AX	2D T1 IP/OP	*See diagram	5/1	1.1 x 1.1	18	Shortest	1.15/2.3	
COR	2D T2 FSE	*See diagram	4/.4	0.5 x 0.5	18	Shortest	130	
AX	3D m Dixon	*See diagram	3/-1.5	1.0 x 1.2	24	5.4	1.4/2.6	1 pre;1 post hand injection
SAG	3D m Dixon Post	*See diagram	3/-1.5	1.0 x 1.2	24	5.4	1.4/2.6	Single phase
OPTIONAL								
COR	3D m Dixon Post	*See diagram	3/-1.5	1.0 x 1.2	24	5.4	1.4/2.6	Single phase
AX	2D DWI FS	*See diagram	5/5	1.5 x 1.5	18	4500	55	B=0,50,1000,1500 pre contrast

SPECIAL INSTRUCTIONS:	
LARGE SUBJECT:	
REFORMATS:	

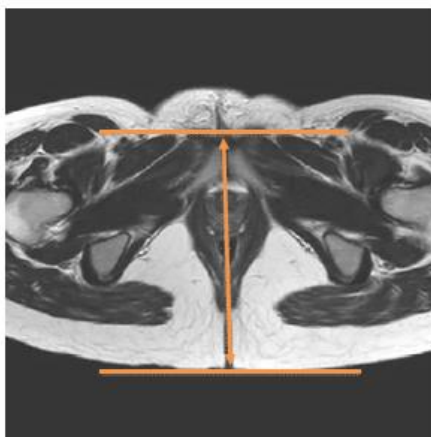
COR image at level of anal canal to plan high res axial T2 and T2FS coverage- cover inferiorly to below gluteal cleft



Sag image in midline to plan axials- cover to below gluteal cleft. Center FOV between anus and vagina



Coverage for COR high RES T2



Coverage for Sag High Res T2

