

Anatomy: LOWER EXTREMITY  
 Sub-Anatomy: Ankle- 3T MR Arthro

-Exams **ORDERABLE- ANKLE**  
 - Routine Coil: Ankle/Chimney coil

SEQUENCE - BASICS				VARIABLE PARAMETERS															
PLANE	SEQ	Slice thickness (mm)	Misc / Comment	MT X	gap	% R F O V	SLICES	Voxel size (mm)	TR	TE				NS	ETL Turbo Factor	Phase Encode	Scan TIME (min)	Pixel Shift BW-kHz	
<b>ROUTINE</b>																			
	<b>3 plane scout</b>		Only use GRE																
1	<b>Sag 2D T1 FS</b>	3.5						0.4x0.5	600	6-9									
2	<b>Sag 2D fsPD</b>	3.5						0.4x0.5	3000	35-40									
3	<b>Ax 2D T1FS</b>	3.5			10%			0.4x0.5	600	6-9									
4	<b>COR 2D T1FS</b>	3.5			10%			0.4x0.5	600	6-9									
5	<b>Cor 3D PD</b>	3D			10%			0.65											
6	<b>Ax T1 VIBE no FS</b>																		
<b>↓ OPTIONAL ↓</b>																			

**Instructions: FOV and Coverage-** On axials, cover 1-2 cm above the ankle joint to skin surface. On coronals, cover from posterior skin to base of metatarsals. On sagittals, cover from slightly medial to medial malleolus to slightly lateral to lateral malleolus.

**Large subject:** Increase voxel-0.7 mm,, if problem with SNR or wrap, etc- call OPB/PMH for remote monitoring help.

**Reconstruction for 3D-** 0.65 mm in all 3 planes

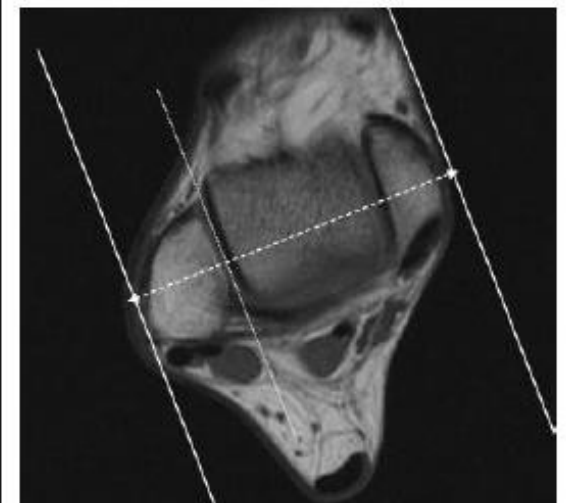
**Others-** Always put marker at the site of most pain, injury or swelling. If motion observed, stop the scan, instruct patient to lay still and repeat the sequence.



Axial



Coronal



Sagittal