

Anatomy: LOWER EXTREMITY
 Sub-Anatomy: Ankle- 1.5T Ortho

-Exams **ORDERABLE- ANKLE**
 - Routine

Coil: Ankle/Chimney coil

SEQUENCE - BASICS																
PLANE	SEQ	Slice thickness (mm)	Misc / Comment	MT X	gap	% R F O V	TR	TE	Nex Avg Acq	NS	ETL Turbo Factor	Phase Encode	Scan TIME (min)	Pixel Shift BW-kHz		
ROUTINE																
	3 plane scout		Only GRE													
1	Cor PD FS	3.5x0.4x0.5			10%		4000	35-40								
2	Sag PD FS	3.5x0.4x0.5			10%		4000	35-40								
3	Sag PD	3.5x0.4x0.5			10%		4000	40-45								
4	Ax PD FS	3.5x0.4x0.5			10%		4000	35-40								
5	Ax PD	3.5x0.4x0.5			10%		4000	40-45								
6	Cor T2 Dixon (or) dual FFE	4.0 x0.5x0.6			10%			55								
↓ OPTIONAL ↓																
	STIR	3-4	Failed fat sat		10%		4000	30-35								

Instructions: FOV and Coverage- On axials, cover 1-2 cm above the ankle joint to skin surface. On coronals, cover from posterior skin to base of metatarsals. On sagittals, cover from slightly medial to medial malleolus to slightly lateral to lateral malleolus. Also, on **Sagittal acquisitions, try to cover as high as possible** superiorly (with increased FOV permissible by the coil).

Large subject: Increase voxel-4x0.5x0.6 mm., if problem with SNR or wrap, etc- call OPB/PMH for remote monitoring help.

Others- Always put marker at the site of most pain, injury or swelling. If motion observed, stop the scan, instruct patient to lay still and repeat the sequence.

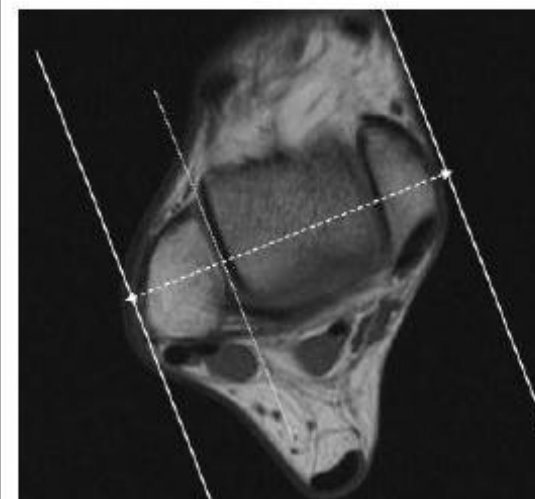
Leave TR as 4000ms and not as the shortest by default.



Axial



Coronal



Sagittal