

## Hantavirus: Know the facts

Recent headlines about a hantavirus exposure on a cruise ship have raised questions and public concern, but experts at UT Southwestern emphasize that infection risk remains low. Unlike the novel coronavirus that was the source of COVID-19, this strain of hantavirus is far less contagious so does not carry the same risks of causing a pandemic.

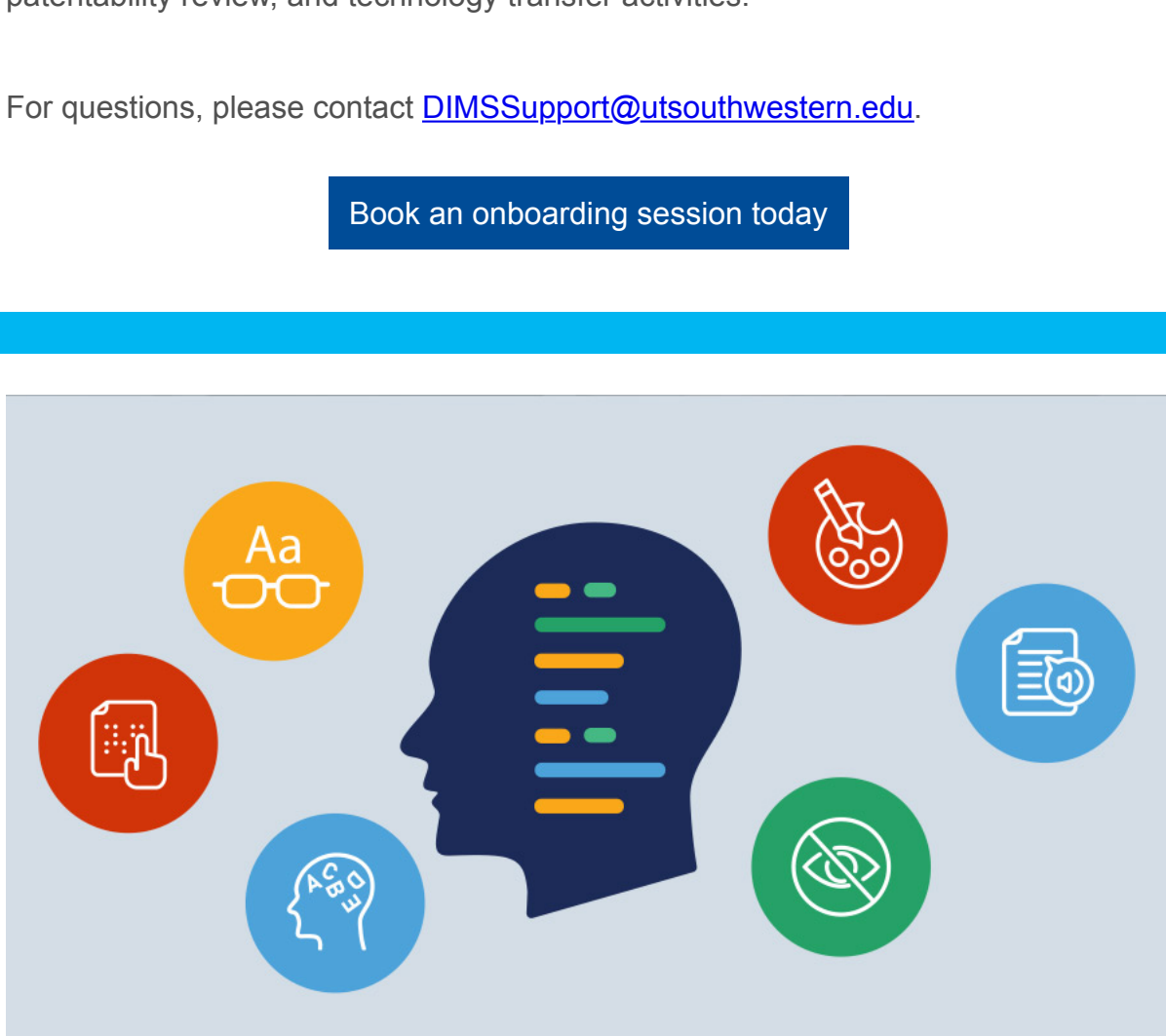
“Hantavirus infections are rare in the U.S.,” says **John Beckham, M.D.**, Division Chief of Infectious Diseases and Geographic Medicine. Fewer than 900 cases were reported nationwide between 1993 and 2023. The recent outbreak involved the Andes strain, which is uncommon and one of the few types capable of limited person-to-person spread in early illness.

Hantavirus is typically transmitted through contact with or inhalation of particles from rodent droppings, urine, or saliva, often when cleaning enclosed or undisturbed spaces. Symptoms can take weeks to appear but progress quickly, beginning with fever, fatigue, and muscle aches before potentially advancing to serious respiratory complications.

There is no specific cure, so early medical attention is critical for severe symptoms. Prevention remains the best defense: Avoid contact with rodent waste, increase ventilation in enclosed areas, and wear a mask when cleaning high-risk spaces such as attics or garages.

For a deeper dive into symptoms, treatment, and prevention, read Dr. Beckham's full MedBlog.

[Stay informed](#)



## Introducing DIMS: A new way to launch discoveries

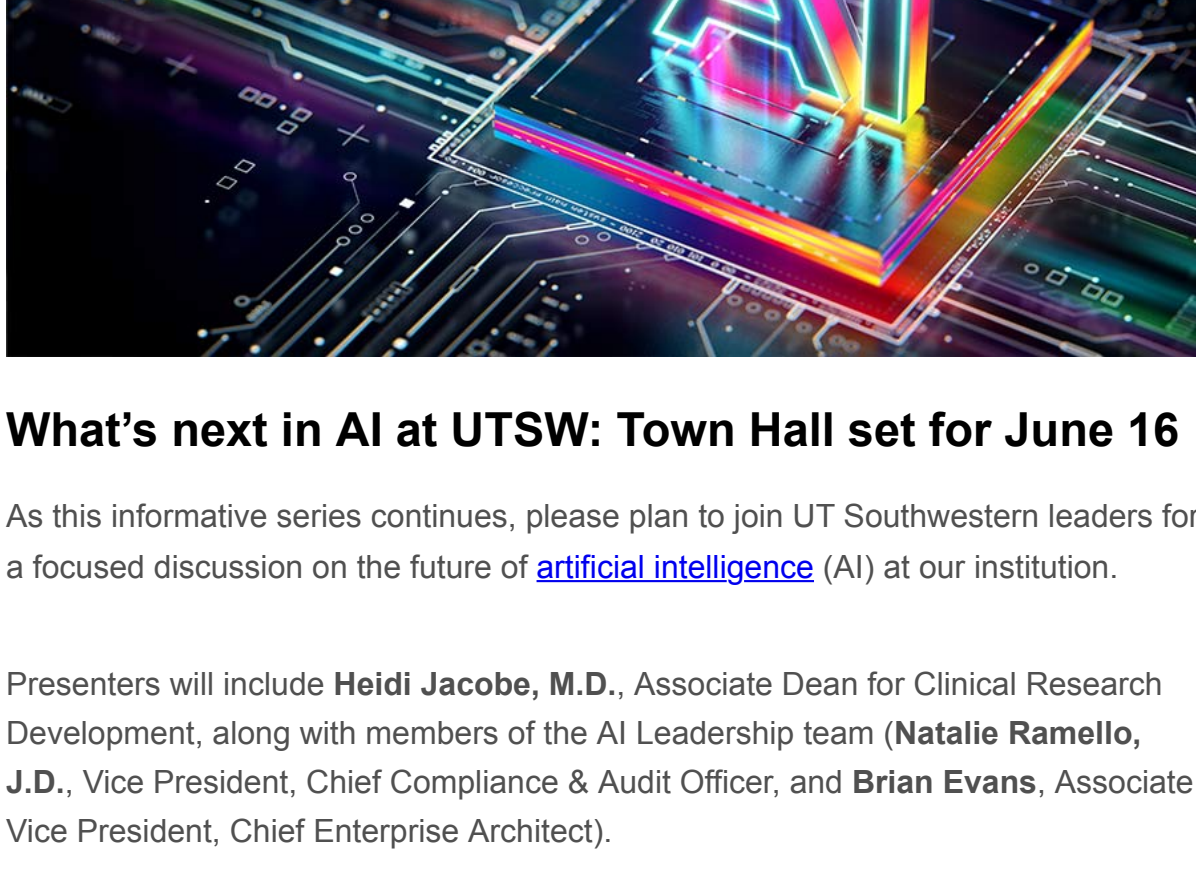
The [Innovation Hub](#) at UT Southwestern has officially unveiled the Discovery Information Management System (DIMS), a new platform designed to help researchers organize, develop, and showcase discoveries with translational and commercialization potential.

Faculty can get started by scheduling a brief onboarding session with the Innovation Hub team. During this guided experience, you'll explore key features and learn how to create or review Discovery Tracks – a structured framework that outlines everything from scientific rationale and development stage to funding needs and next steps. No fully developed project is required. Onboarding helps you assess where your discovery stands and what to do next.

DIMS complements the Office for Technology Development's existing invention disclosure process, which remains the pathway for intellectual property evaluation, patentability review, and technology transfer activities.

For questions, please contact [DIMSSupport@utsouthwestern.edu](mailto:DIMSSupport@utsouthwestern.edu).

[Book an onboarding session today](#)



## Anyone can be an Accessibility Advocate

UT Southwestern's ongoing work to meet [updated digital accessibility standards](#) is welcoming employees who want to get involved and provide hands-on support. Consider joining the Accessibility Advocate program, an initiative designed to support every department with a dedicated point person for digital accessibility information and guidance.

As an Accessibility Advocate, you'll be equipped with updated information and many new tools and be part of a group of volunteers who serve as a crucial link between our Digital Accessibility Specialists and your team and its partners. This role is instrumental in:

- Communicating accessibility initiatives at the department level.
- Supporting the adoption of best accessibility practices among colleagues.
- Promoting continuous learning and expansion of accessibility knowledge.

Advocates will receive regular updates and direct access to our Digital Accessibility Specialists.

Accessibility Advocate general responsibilities:

- Attend a monthly Teams meeting, typically 30-60 minutes in duration.
- Share important accessibility information and updates from these meetings with your teams and partners.
- Provide valuable feedback and insights from your teams to the Digital Accessibility Specialists.

[Fill out the interest form](#)



## What's next in AI at UTSW: Town Hall set for June 16

As this informative series continues, please plan to join UT Southwestern leaders for a focused discussion on the future of [artificial intelligence \(AI\)](#) at our institution.

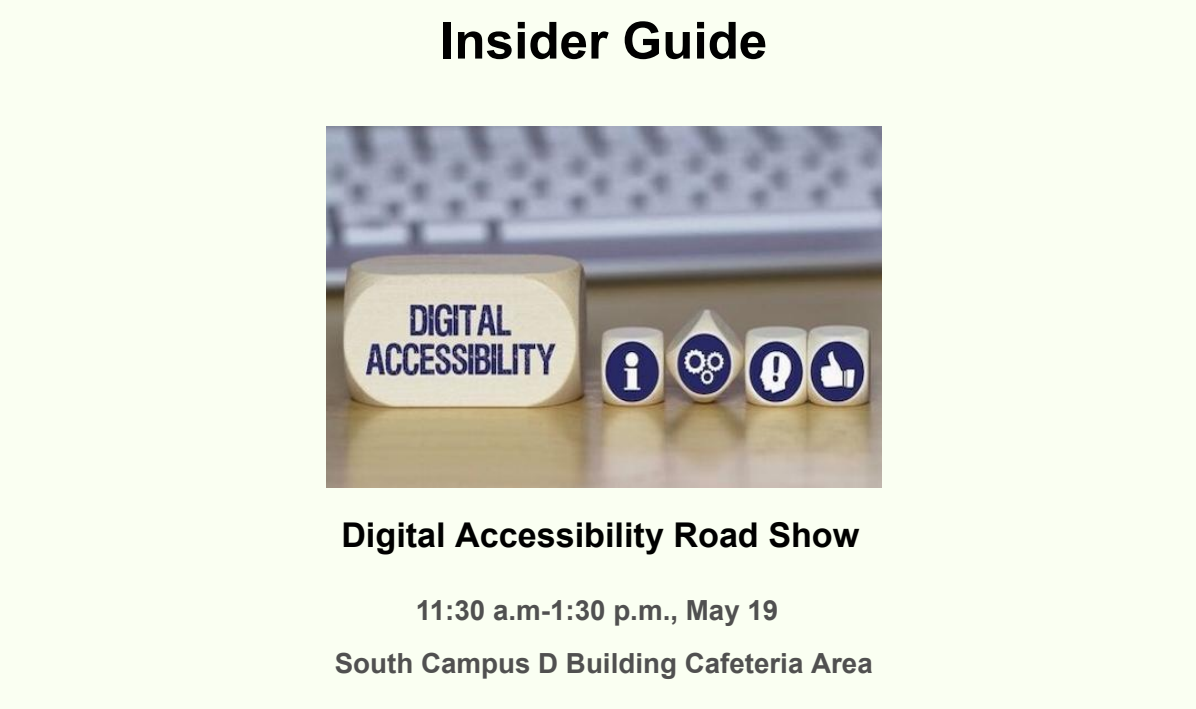
Presenters will include **Heidi Jacobs, M.D.**, Associate Dean for Clinical Research and Development, along with the AI Leadership team (**Natalie Ramello, J.D.**, Vice President, Chief Compliance & Audit Officer, and **Brian Evans**, Associate Vice President, Chief Enterprise Architect).

The session will cover:

- Continued strategic vision for AI in healthcare
- Responsible AI use and governance
- Enterprise AI tool portfolio and licensing
- Security safeguards and compliance
- Upcoming training initiatives and opportunities
- Support and community engagement

This all-campus meeting requires registration and will begin at noon on June 16.

[Register to join](#)



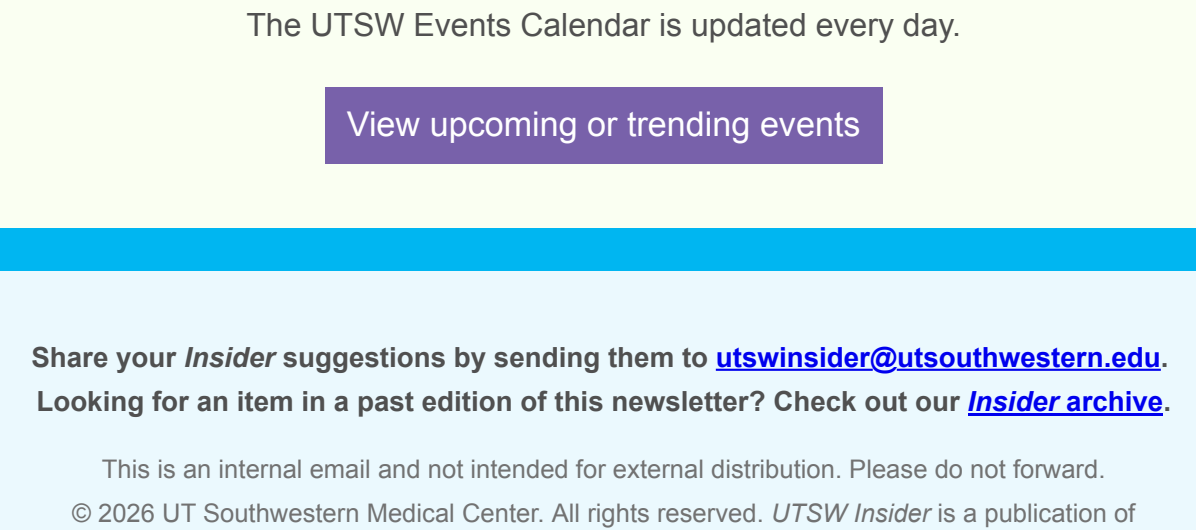
## Be part of our World Cup hype video!

UT Southwestern is excited to celebrate the 2026 FIFA World Cup as an Official Dallas Host City Supporter. As part of the festivities, we're spotlighting our employees, and we want to feature *you*.

Tell us which team you're cheering for and if you're comfortable appearing on a short, fun, camera-ready social media video representing UTSW spirit. Together, we'll capture the energy of this global moment and our connection to the community we serve.

Reach out to the [Brand team](#) with any questions.

[I want to be in the video](#)



## Class of 2026 celebrates commencement, honors Ho Din Award recipient

Our fourth-year medical students celebrated their [commencement](#) last Friday, marking the end of their journey as students and the beginning of their next chapter as physicians.

During the ceremony, **Hannah Chang, M.D.**, was honored with the prestigious Ho Din Award, the highest recognition bestowed to a medical student by Southwestern Medical Foundation for excellence in academics, patient care, and community service.

Inspired by her early experiences in pediatric dermatology at Children's Hospital of Philadelphia, Dr. Chang distinguished herself through academic excellence, compassionate care, and advocacy for underserved communities. She earned honors in every core clerkship, contributed to tele dermatology initiatives, and co-authored 15 peer-reviewed publications during her time at UT Southwestern.

Congratulations to Dr. Chang and the entire Class of 2026 on this incredible achievement!

[Meet this year's Ho Din honoree](#)



## Discounts on Dallas Mavericks camps

Have a future MVP at home? This summer, UT Southwestern employees can take advantage of an exclusive 30% discount on Girls Empowered by Mavericks (GEM) Camps.

Open to girls ages 7-18, GEM Camps are designed to inspire and empower through skill-building, teamwork, and confidence on and off the court.

Choose from upcoming sessions on June 1, June 22, July 6, and July 27, and use code **UTSW30** when registering (GEM Camps only). More dates will be added soon, so be sure to check the website.

As the Official Healthcare Partner of the Dallas Mavericks, UT Southwestern is proud to create opportunities that support and inspire the next generation both on and off the court.

For questions, please contact the [Brand team](#).

[Register for GEM!](#)

## Insider Guide



### Digital Accessibility Road Show

11:30 a.m-1:30 p.m., May 19

South Campus D Building Cafeteria Area

Get hands-on experience with digital accessibility during this interactive event in recognition of Global Accessibility Awareness Day. Explore interactive stations focused on practical accessibility approaches. Complete all three for the opportunity to win a Starbucks cup and gift card. If you can't make it on Tuesday, check out [additional road show dates](#).

[Stop by and explore](#)



### Spring-cleaning your finances

Noon-1 p.m., May 21

Virtual

In this webinar, you'll learn the six things you can do to stay on top of your goals and get a better sense of financial well-being. You'll also discover how you can improve your tax strategy both now and for the future.

[Register to attend](#)



## UTSW Events Calendar

Looking for your daily dose of happenings?

The UTSW Events Calendar is updated every day.

[View upcoming or trending events](#)

Share your *Insider* suggestions by sending them to [utswinsider@utsouthwestern.edu](mailto:utswinsider@utsouthwestern.edu). Looking for an item in a past edition of this newsletter? Check out our [Insider archive](#).