

UT Southwestern
Medical Center

UT Southwestern Medical Center Geriatrics

COVE

Care of the Vulnerable Elderly Program

Your Health, Your Home, Your Team!

To meet the needs of the vulnerable elderly, the Geriatrics Division at UT Southwestern Medical Center established the COVE program – an interdisciplinary team approach dedicated to creating long-term, trusting relationships with our patients and their caregivers.

Home-based primary care programs provide primary, urgent, palliative, and end-of-life care to older people suffering from multiple chronic conditions, when and where they need it. Our COVE team of clinicians, led by a geriatrician, can provide medical care in your home, bringing the interdisciplinary expertise of UT Southwestern Medical Center to your doorstep.

Who Is Eligible?

Potentially eligible candidates for the COVE program must be 65 or older, live within the service area of the program, and meet any of the following:

- Are unable to visit a primary physician's office due to memory or mobility impairment
- Have severe functional impairments, disabilities, and/or multiple chronic conditions
- Require palliative or end-of-life care

An Interdisciplinary Team for Quality Outcomes

Our COVE team includes geriatricians, advanced practice providers, nurses, social workers, and clinical staff assistants.

Geriatricians are physicians who evaluate all new patients and develop care plans, supervise the team, and provide ongoing medical care.

Advanced practice providers are specialized geriatric nurse practitioners who see patients in between the physician visits to follow up on the care plan; they also perform urgent and hospital-discharge visits.

Licensed clinical social workers provide supportive services such as counseling, education, and helping patients/families navigate available resources.

Nurses are available during work hours for care coordination, triage, and all clinical issues.

Clinical staff assistants screen patients for program eligibility and handle scheduling and referrals.

Services We Provide

- Chronic care management
- Transition care management
- Urgent visits
- Coordination of care
- End-of-life care
- Advance care planning

Your Health, Your Home, Your Team!

To meet the needs of the vulnerable elderly, the Geriatrics Division at UT Southwestern Medical Center established the COVE program – an interdisciplinary team approach dedicated to creating long-term, trusting relationships with our patients and their caregivers.

Home-based primary care programs provide primary, urgent, palliative, and end-of-life care to older people suffering from multiple chronic conditions, when and where they need it. Our COVE team of clinicians, led by a geriatrician, can provide medical care in your home, bringing the interdisciplinary expertise of UT Southwestern Medical Center to your doorstep.

Meet the COVE Leaders



Namirah Jamshed, M.D.

*Associate Professor of Internal Medicine,
Medical Director of COVE*

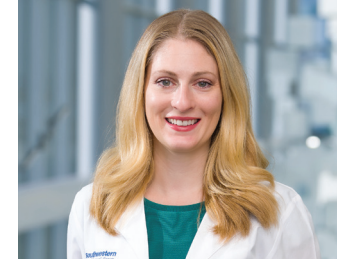
Dr. Jamshed has more than 10 years of experience in home-based primary care and palliative/end-of-life care. After completing her geriatrics fellowship at UCLA, she moved to Washington, D.C., and eventually Texas. A recipient of both the Geriatrics Academic Career and the Practice Change Leader Awards, Dr. Jamshed is an advocate for home-based primary care of the vulnerable elderly. She has a special interest in older people who have dementia with behavioral and psychological symptoms.



Anupama Gangavati, M.D.

Assistant Professor of Internal Medicine

Dr. Gangavati splits her time between UT Southwestern's home-based primary care program and the geriatrics consult service. She completed her geriatrics fellowship at Beth Israel Deaconess Medical Center and received the Geriatric Academic Career Award. After working in the U.S. for several years, Dr. Gangavati returned to India to develop a geriatrics consult service. With that accomplished, she moved to Dallas and joined the UT Southwestern faculty, where she now focuses on developing her expertise in both home-based primary care and perioperative care of the older person.



Tara DuVal, M.D.

Assistant Professor of Internal Medicine

Originally from New York, Dr. DuVal earned her medical degree at the Royal College of Surgeons in Ireland. After completing her fellowship training in geriatrics at UT Southwestern, she joined the UTSW faculty. In addition to her teaching duties, Dr. DuVal works at the Geriatrics Care Clinic and sees homebound patients as part of the COVE program.

Other COVE Team Members

Nurse Practitioners

Mihoko Abegunde, AGPCNP-BC

Cara Neagoe, AGNP-BC

Natalie Garry, GNP-BC

Social Worker

Brenda Edwards, LCSW

Nurse

Theresa Hunt, RN

Staff Assistant

Garri Hines, CSA

To schedule an appointment with the COVE Home-Based Primary Care Program at UT Southwestern or to learn more about it, call [214-645-8650](tel:214-645-8650).



Our COVE Team *Left to right, standing:* Cara Neagoe, AGNP-BC; Theresa Hunt, RN; Mihoko Abegunde, AGPCNP-BC; Natalie Garry, GNP-BC; Garri Hines CSA III
Left to right, sitting: Brenda Edwards, LCSW; Tara DuVal, M.D.; Anupama Gangavati, M.D.; Namirah Jamshed, M.D.; Heather Nemece, LCSW

UT Southwestern Medical Center
Professional Office Building 2, 8th Floor
5939 Harry Hines Blvd.
Dallas, Texas 75390

UT Southwestern
Medical Center