



Prof. Dr. Clemens W.G.M. Lowik
Head Molecular Endocrinology and
Molecular Imaging
Department of Endocrinology
Leiden University Medical Center



Christopher H. Contag, Ph.D.
Associate Professor
Departments of Pediatrics,
Microbiology & Immunology and
Radiology
Director, Stanford Infrared Optics
and Photomedicine Center
Co-director, Molecular Imaging
Program at Stanford (MIPS)



Eva Sevick, Ph.D.
Professor and Cullen Chair in
Molecular Medicine
The Brown Foundation Institute
of Molecular Medicine
Director, Center for Molecular
Imaging
NCI Network for Translational
Research
The University of Texas Health
Science Center -Houston



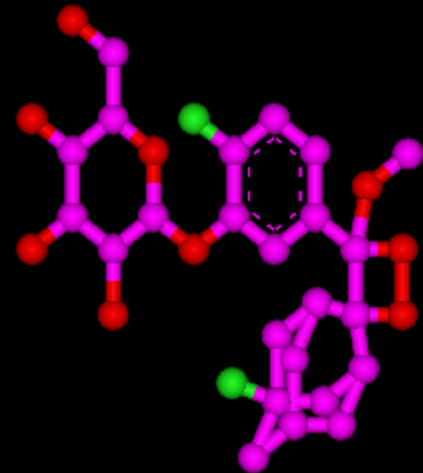
Hisataka Kobayashi, M.D., Ph.D.
Chief Scientist
Molecular Imaging Program/Center
for Cancer Research/
National Cancer Institute/NIH

9th Cancer Imaging Symposium

Innovations in Optical Imaging of Cancer

Thursday, November 12, 2009

UT Southwestern *in vivo* Cancer Cellular and Molecular Imaging Program
T. Boone Pickens Biomedical Building
UT Southwestern Medical Center



9th Cancer Imaging Symposium
UT Southwestern *in vivo* Cancer Cellular and Molecular Imaging Program
T. Boone Pickens Biomedical Building
UT Southwestern Medical Center

Innovations in Optical Imaging of Cancer
Thursday, November 12, 2009



- 8:15 AM Registration and Continental Breakfast
- 8:45 AM Welcoming Remarks
Ralph P. Mason, Ph.D., CSci, CChem
Professor, Department of Radiology
UT Southwestern Medical Center
- 9:00 AM A Dual Biotherapy for Elimination of the Last Cancer Cell
Christopher Contag, Ph.D.
Associate Professor, Department of Pediatrics
Co-director, Molecular Imaging Program at Stanford (MIPS)
Stanford University School of Medicine
- 10:00 AM Refreshment Break
- 10:30 AM Dynamic Bioluminescent, Fluorescent and Chemiluminescent Imaging: Insight Into
Vascular Disrupting Agents and Transgene Expression
Li Liu, Ph.D.
Instructor, Department of Radiology
UT Southwestern Medical Center
- 11:00 AM Whole Body Optical Imaging and Its Applications In Stem Cell Differentiation and
Tumor Progression and Metastasis: Translation Into the Clinic
Clemens W.G.M. Löwik, Ph.D.
Professor, Head Molecular Endocrinology and Molecular Imaging
Leiden University Medical Center
The Netherlands
- Noon Lunch and Poster Session
- 1:00 PM Multiplexed Fluorescence Molecular Imaging for Cancer Detection
Hisataka Kobayashi, M.D., Ph.D.
Chief Scientist, Molecular Imaging Program/Center for Cancer Research
National Cancer Institute/National Institutes of Health
- 2:00 PM Biodegradable Theranostic Polymeric Biomaterials for Cancer Imaging and Treatment
Jian Yang, Ph.D.
Assistant Professor
Biomedical Engineering
UT Arlington
- 2:30 PM Selected Short Presentations
- 3:15 PM Break
- 3:30 PM *In vivo* Optical Imaging of Brain Tumors
Dawen Zhao, M.D., Ph.D.
Assistant Professor
UT Southwestern Medical Center
- 4:00 PM Near-infrared Fluorescence Imaging in Humans: The First Applications
Eva Sevick, Ph.D.
Professor and Cullen Chair in Molecular Medicine
Director, Center for Molecular Imaging
The University of Texas Health Science Center –Houston
- 5:00 PM Cocktail Reception
14th Floor

For more information and to register, visit www.UTSouthwestern.edu/CIPSymposium