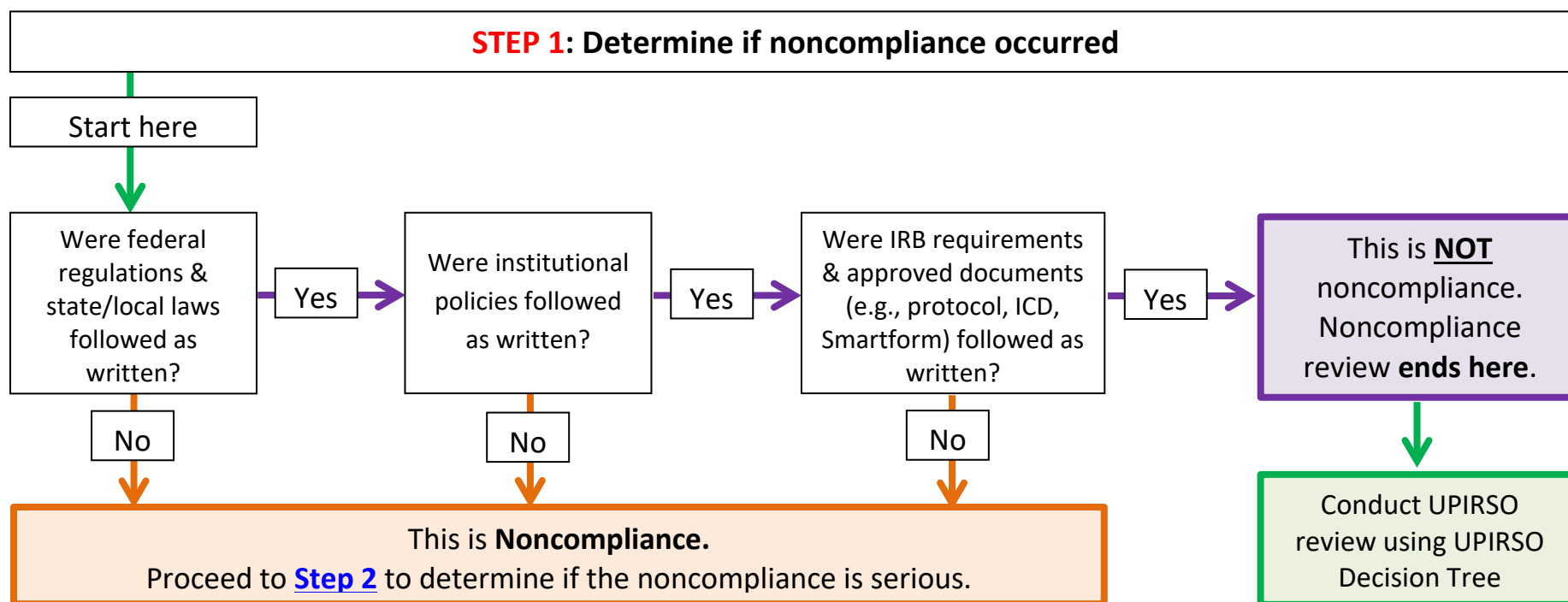


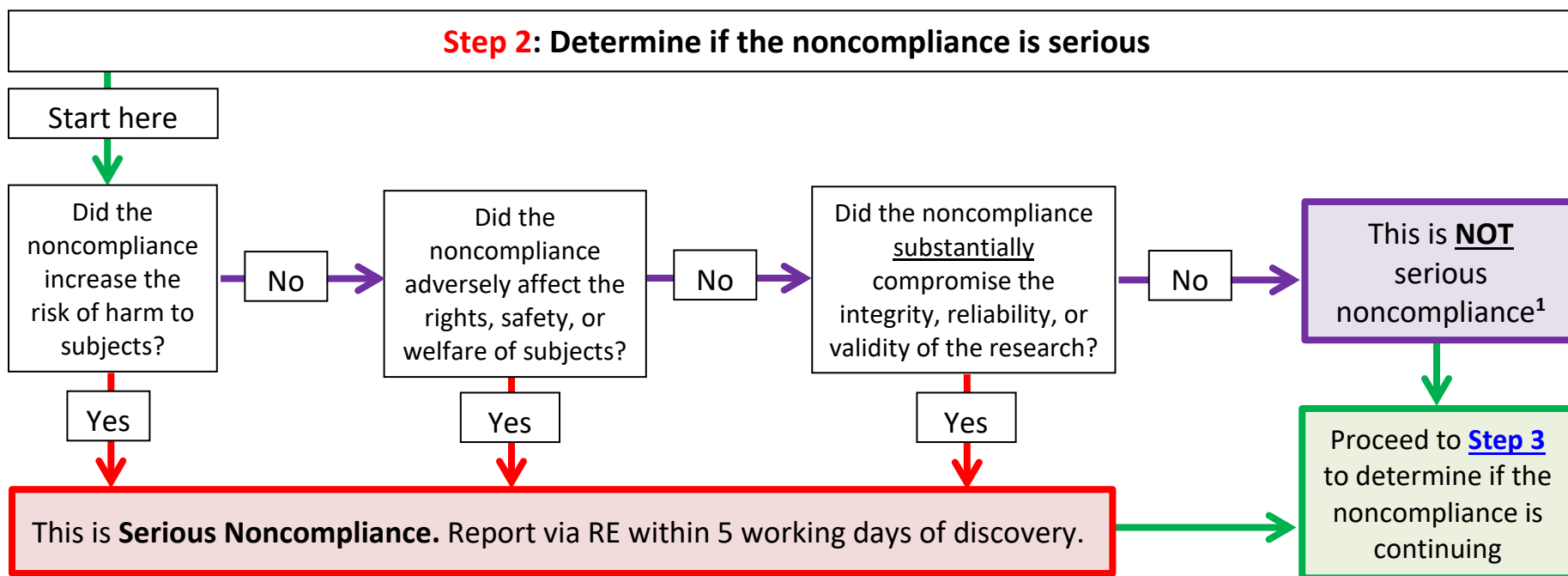
## Noncompliance Decision Tree: What and When to Report to the UTSW HRPP/IRB

Use the following decision tree(s) to determine if an event constitutes noncompliance, serious noncompliance, and/or continuing noncompliance, and report according to [UTSW HRPP policy 9.5](#).

Serious noncompliance and/or continuing noncompliance is promptly reported to the UTSW IRB/HRPP via RE within 5 working days of discovery. Noncompliance that is neither serious nor continuing should be tracked and summarized in the progress report at the next continuing review or notice of study closure, whichever comes first.

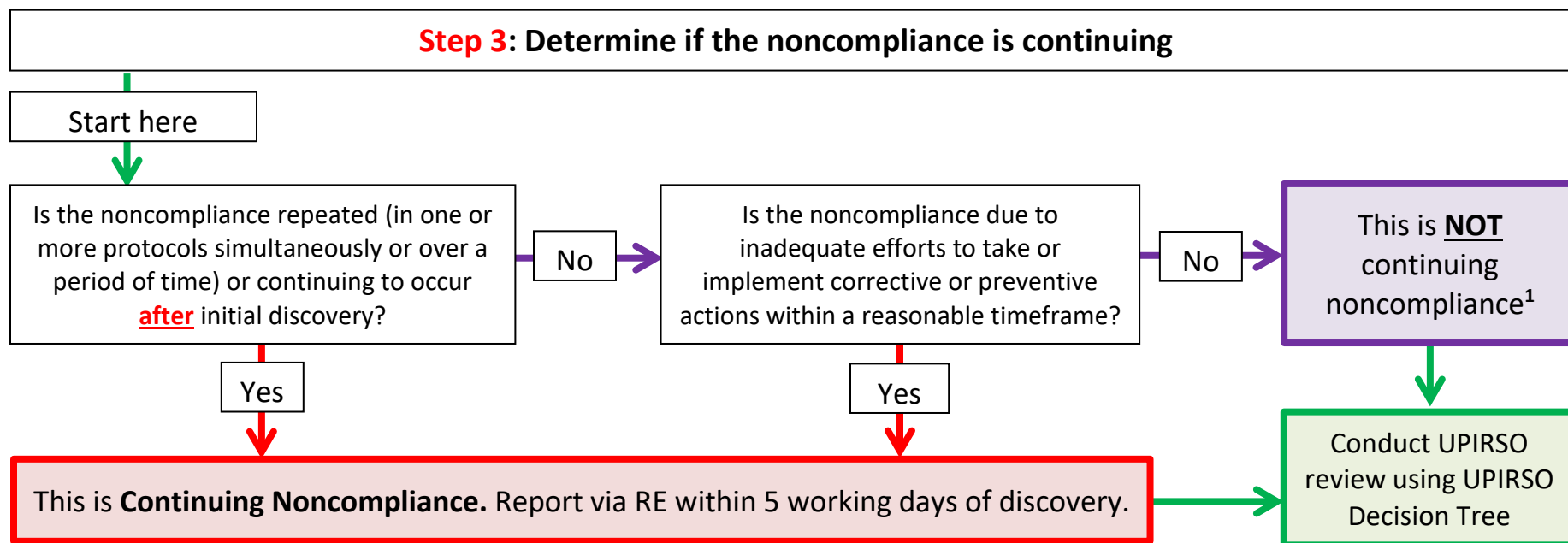


## Noncompliance Decision Tree: What and When to Report to the UTSW HRPP/IRB



<sup>1</sup> Noncompliance that is neither serious **nor** continuing should be tracked and summarized in the progress report at the next continuing review or notice of study closure, whichever comes first.

## Noncompliance Decision Tree: What and When to Report to the UTSW HRPP/IRB



<sup>1</sup> Noncompliance that is neither serious **nor** continuing should be tracked and summarized in the progress report at the next continuing review or notice of study closure, whichever comes first.