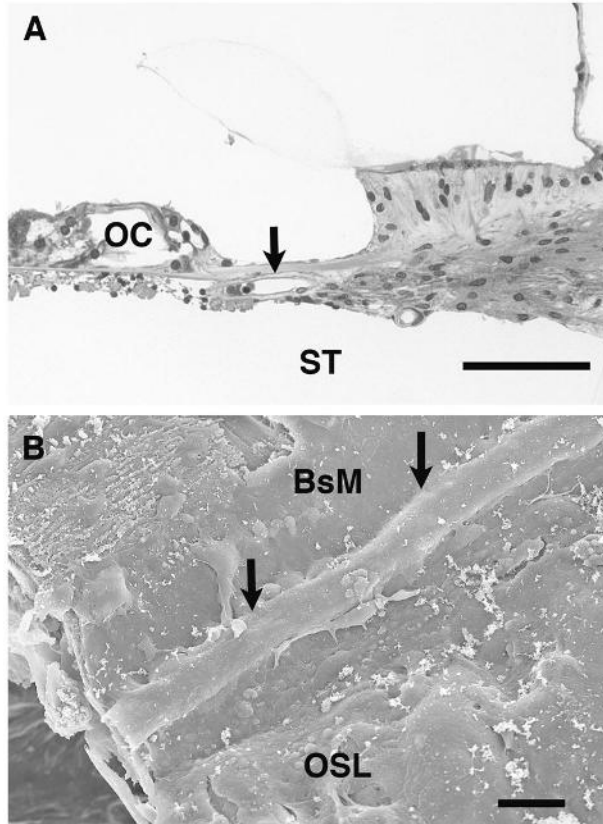


A: Cross section showing a vessel (arrow) emerging from the edge of the osseous lamina. OC, organ of Corti; ST, scala tympani.
B: Scanning micrograph of the under surface of the basilar membrane (BsM) and osseous lamina (OSL). The arrows indicate the spiral vessel beneath the basilar membrane, which is exposed to the perilymphatic space.



From Roland PS, Wright C.G. Surgical aspects of cochlear implantation: Mechanisms of insertional trauma. *Adv Otorhinolaryngol* 2006;64:11-30. Copyright S. Karger AG, Basel. Reproduced with permission.