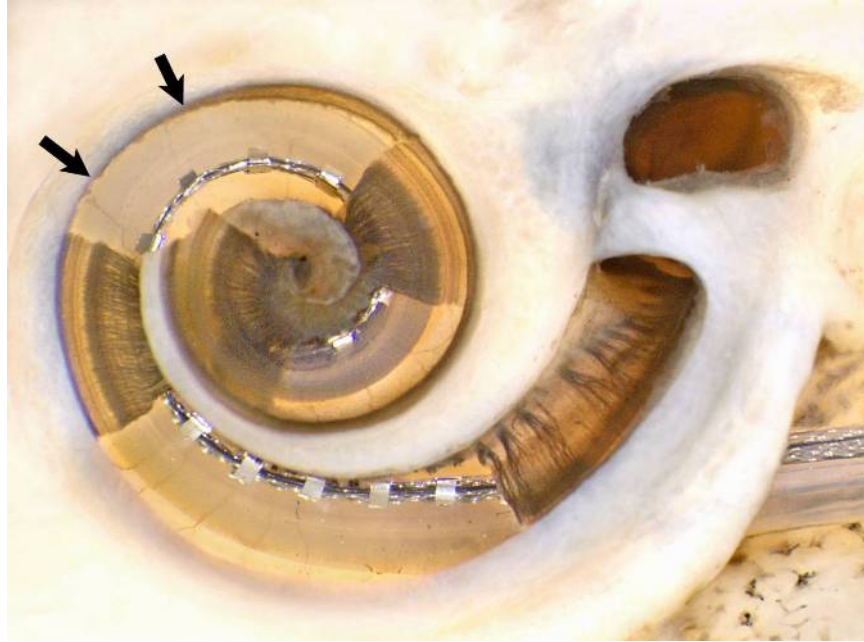


Cochlear dissection after insertion of an implant electrode array. Portions of the osseous lamina and basilar membrane have been removed to more clearly show the electrode lying in scala tympani. The silicone carrier of the array has been lightly stained with osmium so that it has a light brown color. Note that in the area indicated by the arrows the array is in direct contact with the lateral wall under the basilar membrane.

---



From Roland PS, Wright C.G. Surgical aspects of cochlear implantation: Mechanisms of insertional trauma. *Adv Otorhinolaryngol* 2006;64:11-30. Copyright S. Karger AG, Basel. Reproduced with permission.