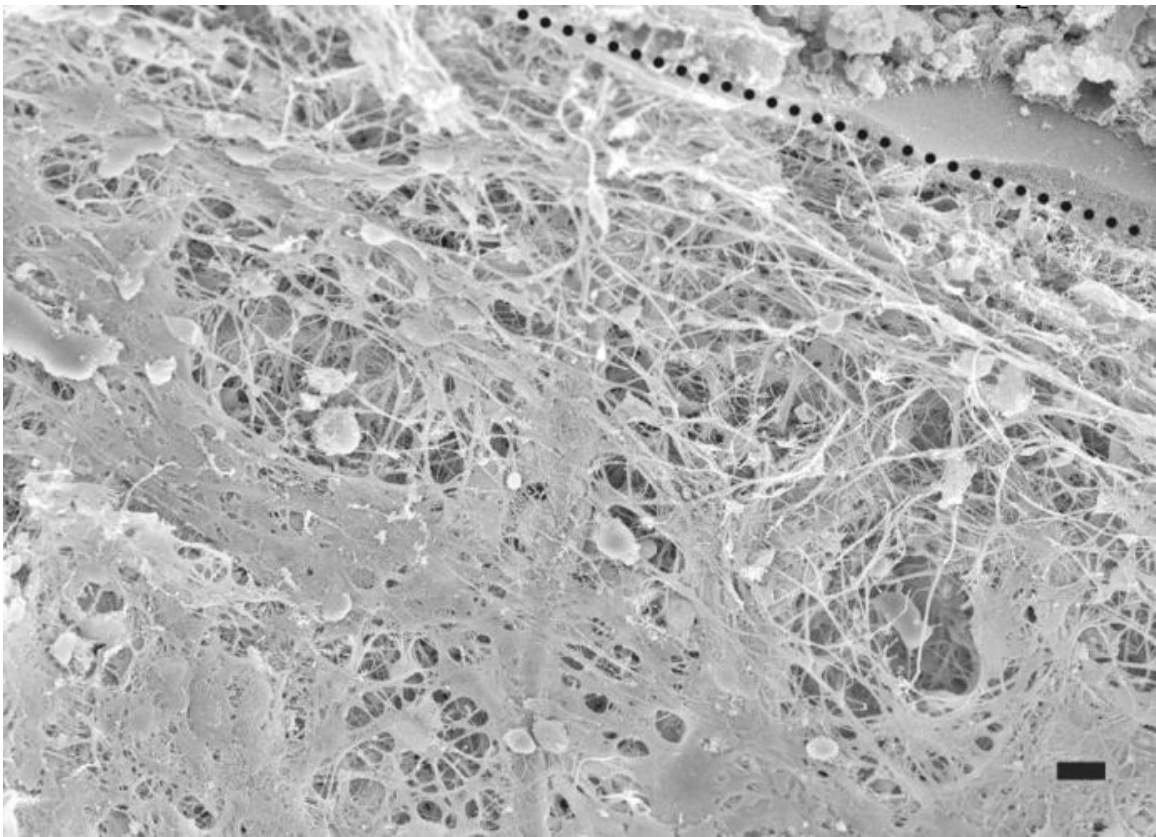


Scanning electron microscopic view of the surface of the spiral ligament in the area immediately below the attachment of the basilar membrane. (The site of attachment of the basilar membrane to the lateral wall tissues is indicated by the dotted line.) Note the highly porous, mesh-like structure of the spiral ligament surface.



From Roland PS, Wright C.G. Surgical aspects of cochlear implantation: Mechanisms of insertional trauma. *Adv Otorhinolaryngol* 2006;64:11-30. Copyright S. Karger AG, Basel. Reproduced with permission.