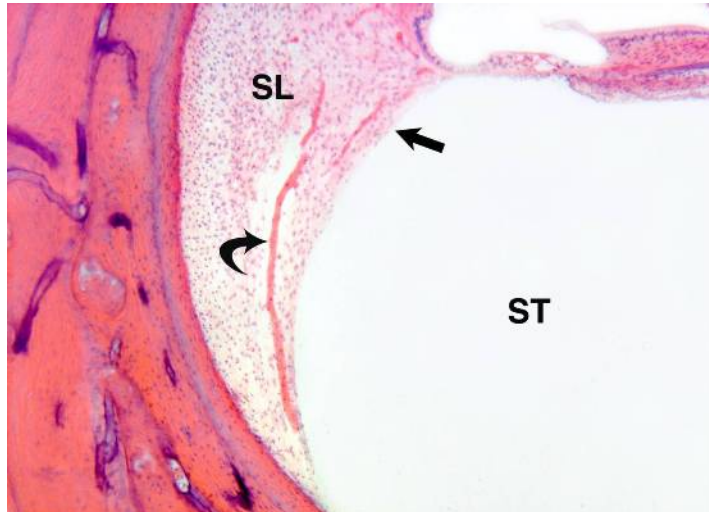


Cochlear cross section showing the lower portion of the spiral ligament (SL) facing scala tympani (ST). The curved arrow indicates a venule coursing through the spiral ligament toward the floor of scala tympani. The straight arrow indicates the portion of the spiral ligament seen in the next image.

---



From Roland PS, Wright C.G. Surgical aspects of cochlear implantation: Mechanisms of insertional trauma. *Adv Otorhinolaryngol* 2006;64:11-30. Copyright S. Karger AG, Basel. Reproduced with permission.