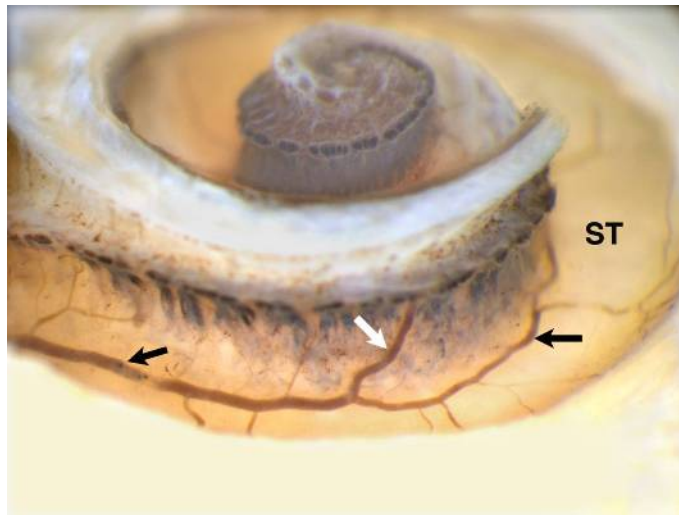


Dissection view of scala tympani and modiolum in the basal turn showing the posterior spiral vein (black arrows). A vein (white arrow) on the side of the modiolum joins the posterior spiral vein. Compare this image with the modiolar cross sections seen in slide 14. This preparation received light decalcification but no bone was removed from the modiolar wall. ST, floor of scala tympani.

---



From Roland PS, Wright C.G. Surgical aspects of cochlear implantation: Mechanisms of insertional trauma. *Adv Otorhinolaryngol* 2006;64:11-30. Copyright S. Karger AG, Basel. Reproduced with permission.