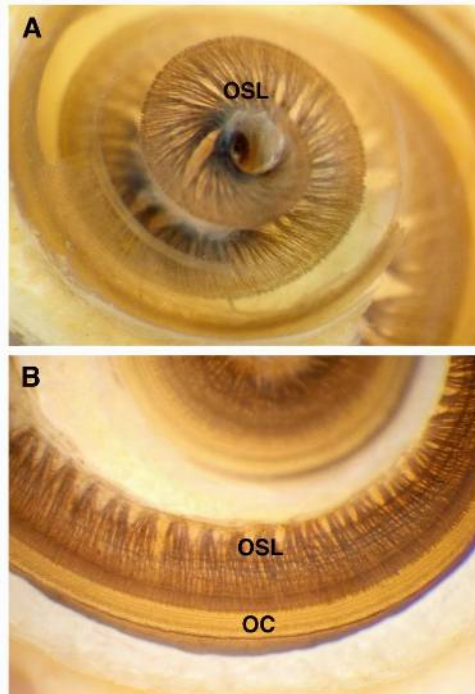


**A:** Apical cochlear turn showing myelinated nerve fibers within the osseous spiral lamina (OSL).

**B:** Basal turn. The organ of Corti (OC) is seen as a lightly-stained band lying adjacent to the osseous lamina.

---



Micrograph shown in "B" from Wright CG, Roland PS. Temporal bone microdissection for anatomic study of cochlear implant electrodes. *Cochlear Implants International* 2005;6(4):159-168. Copyright John Wiley & Sons Limited. Reproduced with permission.