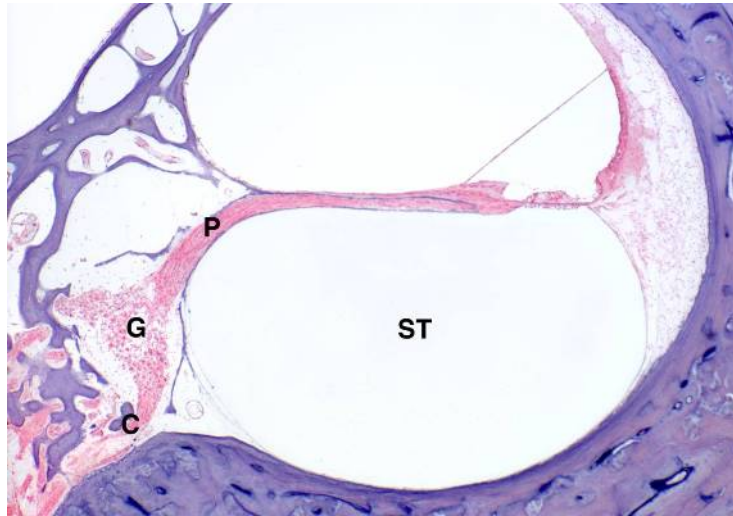


Cochlear cross section showing the spiral ganglion (**G**) with peripheral (**P**) and central (**C**) processes projecting from the ganglion to enter the osseous lamina and modiolus. Note the very thin bone overlying the spiral ganglion and under surface of the osseous lamina.



From Roland PS, Wright C.G. Surgical aspects of cochlear implantation: Mechanisms of insertional trauma. *Adv Otorhinolaryngol* 2006;64:11-30. Copyright S. Karger AG, Basel. Reproduced with permission.