

medicine minute

Tuesday, March 26, 2024

kudos

MEDICAL EDUCATION

Syed, Kainthla and Colleagues Launch 'Frontiers in Neoplasia' Curriculum



Associate Professor **Samira Syed, M.D.** (pictured, left), and Assistant Professor **Radhika Kainthla, M.D.** (pictured, right), both in the Division of Hematology and Oncology, collaborated with Assistant Professors **Kiran Kumar, M.D.**, and **Mona Arbab, M.D.**, from the Department of Radiation Oncology, to create a dynamic novel curriculum for fourth-year medical students to enhance their understanding of cancer.

"The monthlong course, 'Frontiers in Neoplasia,' involved 55 speakers from various disciplines, including medical oncology, surgery, radiation oncology, cardiology, dermatology, pathology, genetics, pediatrics, reproductive medicine,

machine learning, radiology, and palliative care," says Dr. Syed. "Students were immersed in the field of neoplasia through didactic teaching sessions, multidisciplinary tumor board participation, and interactive facility tours."

Students learned about clinical trial design for treatment of individual cancer, and applied evidence-based medicine to solve patient cases assigned to them and presented these in a collaborative multidisciplinary mock tumor board facilitated by faculty mentors. Finally, they learned about precision medicine from leaders in the field, and about oncology on a global scale from international faculty oncologists. The financial toxicity of cancer and social determinants of health were highlighted through these sessions.

"Overall, the feedback of this course was very favorable from medical students going into a variety of specialties," Dr. Syed adds. "We hope to continue these efforts and expand this novel curriculum in the future to other student bodies to enhance understanding and interest in neoplasia."

COMMUNITY ENGAGEMENT

Cardiometabolic Research Unit Receives Team Excellence Award



Neil Keshvani, M.D. (second from right), a Cardiology fellow and a postdoctoral researcher, and **Daniel Ayodele, M.B.S.** (right), a Clinical Research Coordinator in the Cardiometabolic Research Unit (CMRU) recently received the Team Excellence in Community Engagement Award from the Union Gospel Mission (UGM) Dallas, a full-service shelter for the unhoused, in recognition of a community engagement project the team initiated at UGM Dallas Calvert Place Men's Shelter in October 2023. Members of the laboratory conducted comprehensive cardiovascular health screenings, education, and nutritional guidance to over 200 individuals.

“Our entire laboratory collaborated in planning and executing this project,” says **Michael Mitakidis, M.D.**, an Instructor in the Division of Cardiology and CMRU Administrator. “Dr. Keshvani assumed the medical leadership role, ensuring that cardiovascular risk assessments were meticulously defined and administered. During the patient education session, he emphasized cardiovascular risk and self-care. Following this, Daniel Ayodele, who was responsible for operations that day, orchestrated a comprehensive health-screening maze in the shelter’s hall, with CMRU's team members carefully recording screening results for the cardiovascular risk report as residents moved through various stations. At the final station, residents engaged in discussions about their screening findings with our clinicians.”

The CMRU has been invited to continue this community service.

“The CMRU has become a trusted partner, vital in addressing the medical well-being of residents on our campuses,” says Bruce J. Butler (pictured second from left), Chief Executive Officer of UGM Dallas. “We recognize and acknowledge their efforts to inspire, educate, encourage, and uplift our community and help shield our most vulnerable people.”

Also pictured at left is Tonya Johnson, UGM's volunteer coordinator.

The Cardiometabolic Research Unit is directed by Thomas J. Wang, M.D., and Ambarish Pandey, M.D., M.S.C.S. To learn more, visit the [CMRU lab site](#).

research roundup

DIABETES MANAGEMENT

Abreu and Colleagues Investigate Continuous Glucose Monitors



Marconi Abreu, M.D., an Associate Professor in the Division of Endocrinology, and colleagues recently published a [review study](#) of diabetes technology in *Current Diabetes Reports*.

The authors evaluate continuous glucose monitors in people with type 2 diabetes treated with insulin or non-insulin therapies, smart insulin pens and connected devices to track compliance and guide insulin delivery, and mechanical patch pumps to reduce the burden of multiple daily insulin injections.

“The use of technology in the management of type 2 diabetes generates glycemic data previously inaccessible, reduces

barriers for insulin initiation, improves glycemic control, tracks adherence to therapy, and improves user satisfaction,” the authors write.



need to know

DESIGNATED HOLIDAY

Clinics, Academic Offices, and Labs Closed on Friday, March 29

March 29 is a [designated holiday](#) for UT Southwestern. All clinics, central administration, academic offices, and research labs will be closed. Hospitals will be fully operational with the appropriate staff in support areas.

In observance of the holiday, there will be no Internal Medicine Grand Rounds.

If you have questions about the holiday policy, call Human Resources at 214-648-0821.

in case you missed it

CENTER TIMES PLUS

Albin to Discuss Food as Medicine on April 11



As the granddaughter of farmers, **Jaclyn Albin, M.D.**, an Associate Professor of Pediatrics and Internal Medicine, understood that the crops her family grew in the fields of Texas would later be served at the family table.

“Many people don’t understand where their food actually comes from, or the powerful way it can impact health,” says Dr. Albin, whose grandparents grew everything from sorghum grain to black-eyed peas.

Years after learning how to grow vegetables, Dr. Albin would become a pioneer in culinary medicine – an evidence-based field that combines the expertise of physicians, registered dietitians, and chefs to help patients improve their nutrition and ease their health problems. Blending the art of farm-to-table cooking with the science of nutrition and medicine became a passion for Dr. Albin. Its impact was reinforced by her need to find alternative foods after her husband received a diagnosis of celiac disease, a disorder in which gluten intake provokes a harmful immune response.

On April 11, as part of the President’s Lecture Series, Dr. Albin, a certified culinary medicine specialist, will discuss “A Delicious Antidote: The Current & Future Landscape of Food as Medicine.” The 4 p.m. lecture will take place in the Tom and Lula Gooch Auditorium.

To read more of Dr. Albin’s story, click [here](#).

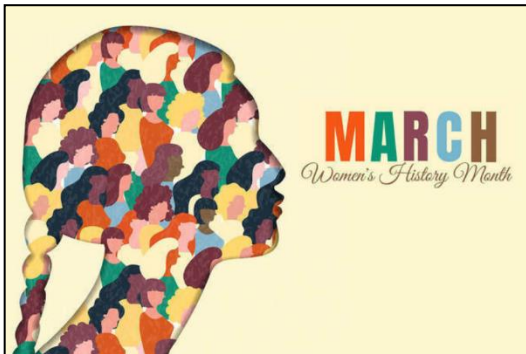
Articles and Videos Featuring Internal Medicine Colleagues

- [UTSW, Other Leading Medical Centers Create AI Consortium](#) (via UTSW Newsroom, with **Eric Peterson, M.D., M.P.H.**)
- [Nerve Decompression Shows Promise for Diabetic Neuropathy Patients](#) (via UTSW Newsroom, with **Philip Raskin, M.D.**)

this week

CELEBRATIONS

Nesbitt to Host Women's History Month Event on March 27



Shawna Nesbitt, M.D., a Professor in the Division of Cardiology and Vice President and Chief Institutional Opportunity Officer, will host “She Talks,” an event featuring UTSW women leaders who will share inspiring stories, experiences, and advice, on **Wednesday, March 27, at noon in D1.502**. The celebration kicks off with a reception including sweets and refreshments at 11:30 a.m.

Scheduled speakers include:

- **Archana Cronjaeger, M.S.E.E.**, Assistant Vice President for Hospital Facilities, Facilities Management
- **Susan Hernandez, D.N.P., M.B.A., RN**, Associate Vice President and Health System Chief Nurse Executive
- **Josephine Thinwa, M.D., Ph.D.**, Assistant Professor in the Division of Infectious Diseases & Geographic Medicine
- **Larissa Velez, M.D.**, Associate Dean for Graduate Medical Education

To register for the event, click [here](#).

Noteworthy Lectures & Events

- **Wednesday, March 27, 8 a.m.:** [Geriatrics Grand Rounds](#) with **Dr. Shanup Dalal** (Hospice & Palliative Care Fellow) – “Gone with the Wind: Providing Relief at the End of Life”
- **Wednesday, March 27, 8 a.m.:** [GI Grand Rounds](#) with **Dr. Raman Muthusamy** (University of Californian, Los Angeles) – “Transoral Incisionless Fundoplication”
- **Thursday, March 28, 8 a.m.:** [Infectious Diseases Grand Rounds](#) with **Dr. Jonathan Li** (Harvard Medical School) – “Understanding and Managing COVID-19 in the Immunosuppressed Population”
- **Thursday, March 28, 9 a.m.:** [Carolyn P. Horchow Women's Health Symposium](#) – “What's New: Advances in Mind, Body, and Heart Health”
- **Thursday, March 28, Noon:** [Moss Heart Center Seminar Series](#) with **Dr. Beverly Rothermel** (Cardiology) – “Supercharged Mitochondria Delay Lineage Commitment in Down Syndrome”



Internal Medicine Events Calendar

[Click to view additional events](#)

upcoming events

EDUCATION & TRAINING

Seldin Symposium Scheduled for April 19



The ninth annual **Donald W. Seldin Research Symposium** will be held on **Friday, April 19**, with event scheduled throughout the day.

The keynote address will be delivered by **William G. Kaelin Jr., M.D.**, a Professor of Medicine at the Dana-Farber Cancer Institute and Nobel Prize laureate, at **8 a.m. in D1.502**. His topic: “New Treatments for Anemia, Ischemia, and Cancer Emerging from Studies of von Hippel-Lindau Disease.”

The Seldin-Smith Physician Scientist Lecture will be presented by **Steven E. Mansoor, M.D., Ph.D.**, an Assistant Professor of Internal Medicine in the Division of Cardiovascular Medicine at Oregon Health & Science University, at **noon in D1.502**. His topic: “From Molecular Structure to Drug Development: How Structural Biology Can Impact Cardiovascular Medicine.”

Poster presentations ranging from fundamental biology to quality improvement will be displayed along the McDermott Center Plaza, with in-person sessions from **11 a.m. to noon** and from **1 to 2 p.m.**

The symposium concludes with presentations by the **Foster Fellows** and selection of the **Seldin Scholar** at **8 a.m. on April 26 in D1.502**.

To learn more, visit the [Seldin Symposium web site](#).

reminders

SOUTHWESTERN ACADEMY OF TEACHERS

Gilman Educational Symposium Scheduled for April 3

The 13th annual [Alfred G. Gilman Symposium on Education](#) will be held on **Wednesday, April 3, from 7:30 a.m. to 4 p.m.** as a hybrid event. Sponsored by the Southwestern Academy of Teachers, the event will focus on “Developing the Next Generation of Leaders in Medicine.”

The keynote address will be delivered by **Joshua Hartzell, M.D.**, a retired Army colonel who currently serves as faculty within the Center for Health Professions Education at Uniformed Services University in Bethesda, Maryland. Dr. Hartzell is an expert in mentorship and leadership development for faculty and trainees in academic medicine.

To register for the event, click [here](#).

To view the symposium agenda, click [here](#).

RESEARCH SYMPOSIUM

Experts to Speak on Urolithiasis at Mineral Metabolism Event

The third **Pak Symposium on Mineral Metabolism Research** is scheduled for **Friday, April 5, from 8 a.m. to 3:30 p.m.** in the T. Boone Pickens Auditorium (NG3.112). The focus of this year’s conference will be urolithiasis, a condition that occurs when kidney stones pass into the urinary tract.

Fredric L. Coe, M.D., a Professor of Medicine at the University of Chicago, will present the keynote address: “Interactions Between Crystal Deposits, Inflammation and Renal Physiology in Pathogenesis of Calcium Renal Stones.”

To register for the event, click [here](#).

UPDATE IN INTERNAL MEDICINE

Annual CME Conference Scheduled for April 13

The annual Update in Internal Medicine CME Conference is scheduled for **Saturday, April 13, from 7:45 a.m. to 3 p.m.** The one-day live event will again be offered as a hybrid learning experience, with synchronous in-person and online presentations in addition to pre-recorded on-demand content. The presentations will be available for up to one year after the conference, totaling 16 units of CME credit and the opportunity to apply for MOC within the timing requirements of the ABIM rules.

To learn more or to register for the event, click [here](#).

CONTINUING MEDICAL EDUCATION

Registration Now Open for GI Conference

“What’s New in GI,” a one-day, in-person CME course on **Saturday, April 20**, will provide attendees with practical information that can be applied today in their clinical practice.

Directed by Associate Professor **Neha Patel, M.D.**, and Assistant Professor **David Fudman, M.D.**, from the Division of Digestive and Liver Diseases, the course is designed for gastroenterologists, GI surgeons, internal medicine physicians, family practice physicians, nurse practitioners, physician assistants, and other healthcare providers who have an interest in gastroenterology.

To learn more or to register for the event, click [here](#).

COMMUNITY

Join Team UTSW at the Take Steps Walk on April 20

UT Southwestern is sponsoring the **Take Steps Walk**, an annual event that benefits the Crohn’s and Colitis Foundation, on **Saturday, April 20**, at Oak Point Park in Plano. Its purpose is to help accelerate research, advance treatments, and provide education and support programs to improve quality of life for patients living with inflammatory bowel disease.

UTSW will have a walk team at the event. Employees, family members, and friends are welcome to join the team.

To join the team, contact [Susan Hughes](#).

correction

An announcement in the March 19 edition listing faculty who are members of the Association of University of Cardiologists did not include **Benjamin Levine, M.D.** We regret the omission.

When we learn of a mistake, we acknowledge it with a correction. If you spot an error, please let us know at IMNews@UTSouthwestern.edu.

Look for the next *Medicine Minute* on **Tuesday, April 2**.
Share feedback and news items with us at IMNews@UTSouthwestern.edu

Copyright 2024 UT Southwestern Medical Center. All rights reserved.
Medicine Minute is a publication of the Department of Internal Medicine at UT Southwestern Medical Center.



