

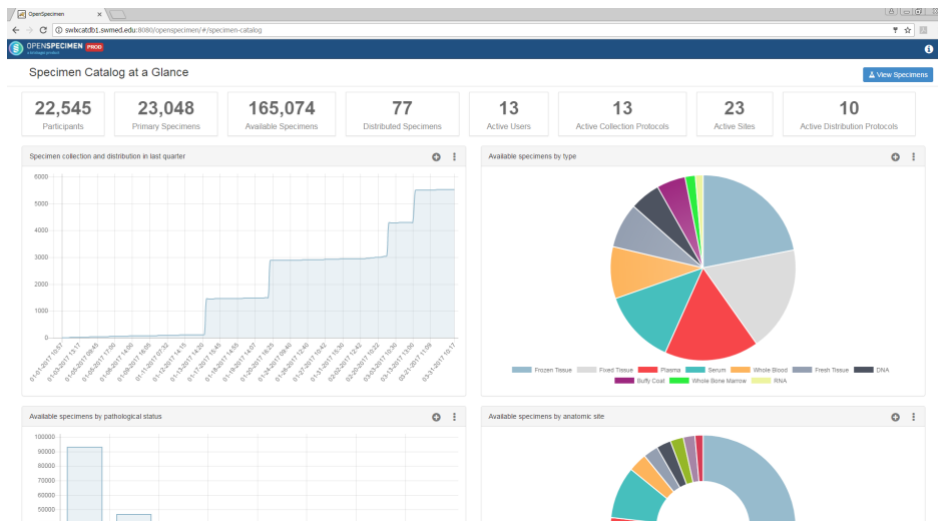
Tip Sheet for Using the Specimen Catalog

(Use **Chrome** browser for best results)

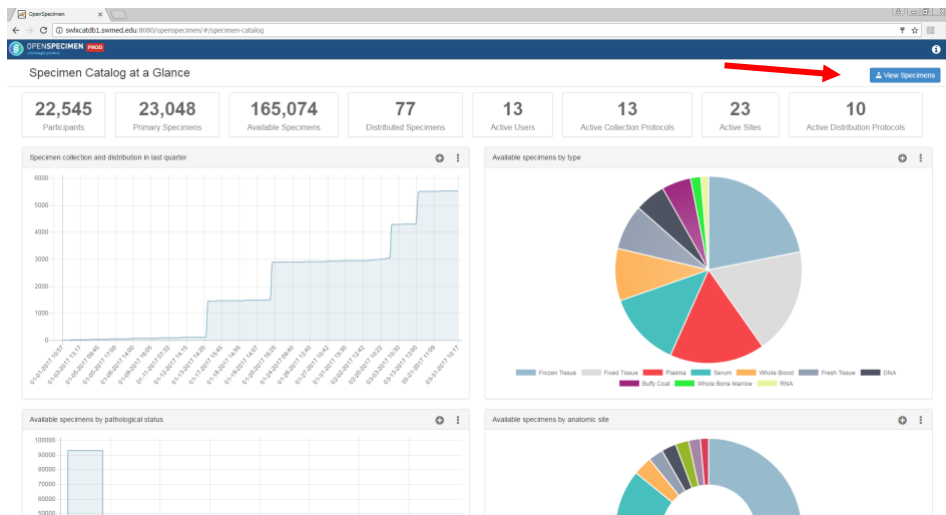
1. The Specimen Catalog is a way to query our current inventory of samples collected since January 2014. To officially request samples for research, a biospecimen request form must be submitted in iLab. Links to iLab and tip sheets are located on the TMSR website.

Specimen Catalog Link: <http://swlxcatdb1.swmed.edu:8080/openspecimen/#/specimen-catalog>

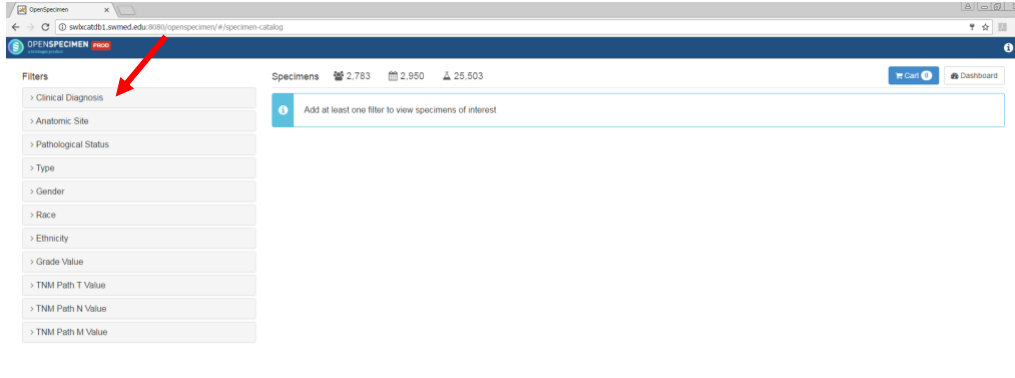
2. Clicking on the link will bring you to this page:



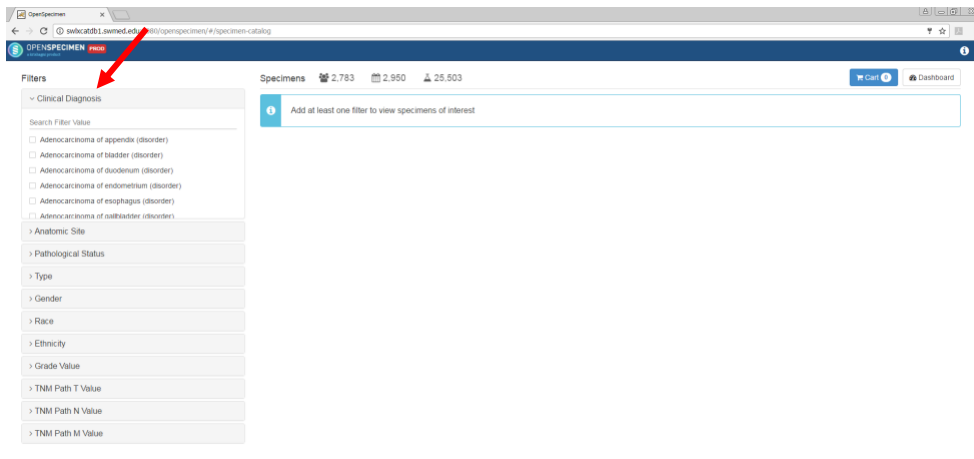
3. Click on blue **View Specimens** icon (top right corner) to reach the *Specimen Catalog*



4. Use the **Filters** on the left side to identify cases



5. Click on the **Clinical Diagnosis** filter to see options
You can also type your choice on the Search Filter Value line



6. Similarly, click on the **Anatomic Site** to see options
You can also type your choice on the Search Filter Value line

7. Click on the **Pathological Status** to see options

- Malignant: invasive cancer cases
- Malignant, Pre-Invasive: in situ cases
- Non-Malignant: non-cancerous (benign) cases
- Non-Malignant, Diseased: non-cancerous, but not normal cases
- Not Specified: Other

8. Click on **Type** to see options

- Body Cavity Fluid: ascites, pleural effusion, cyst fluid, etc.
- Buffy Coat
- Fixed Tissue: FFPE tissue block
- Frozen Tissue: Snap frozen tissue aliquot
- Plasma
- Serum

9. Click on **Gender** filter to choose between *Female* and *Male* patients

10. Click on **Race** filter to select

American Indian or Alaska Native
Asian
Black or African American
Native Hawaiian or Other Pacific Islander
White

11. Click on **Ethnicity** filter to select

Hispanic or Latino
Not Hispanic or Latino

12. Click on **Grade Value** to select tumor registry values for specimens

13. Click on **TNM Path T Value** to select tumor registry values for specimens

14. Click on **TNM Path N Value** to select tumor registry values for specimens

15. Click on **TNM Path M Value** to select tumor registry values for specimens

16. If you would like to obtain any specimens, please complete an iLab specimen request form